

9.086  
9.083  
8.935  
8.914  
8.848  
8.842  
8.722  
8.718  
8.713  
7.231  
7.214  
7.204  
7.186  
7.167  
7.143  
7.126  
4.904  
4.890  
4.884  
3.353  
3.163  
3.142  
3.128  
3.105  
2.627  
2.619  
2.511  
2.507  
2.503  
1.542  
1.526  
1.509  
1.302  
1.286  
1.269  
1.210  
1.194  
1.176  
1.159  
0.763  
0.758  
0.747  
0.741

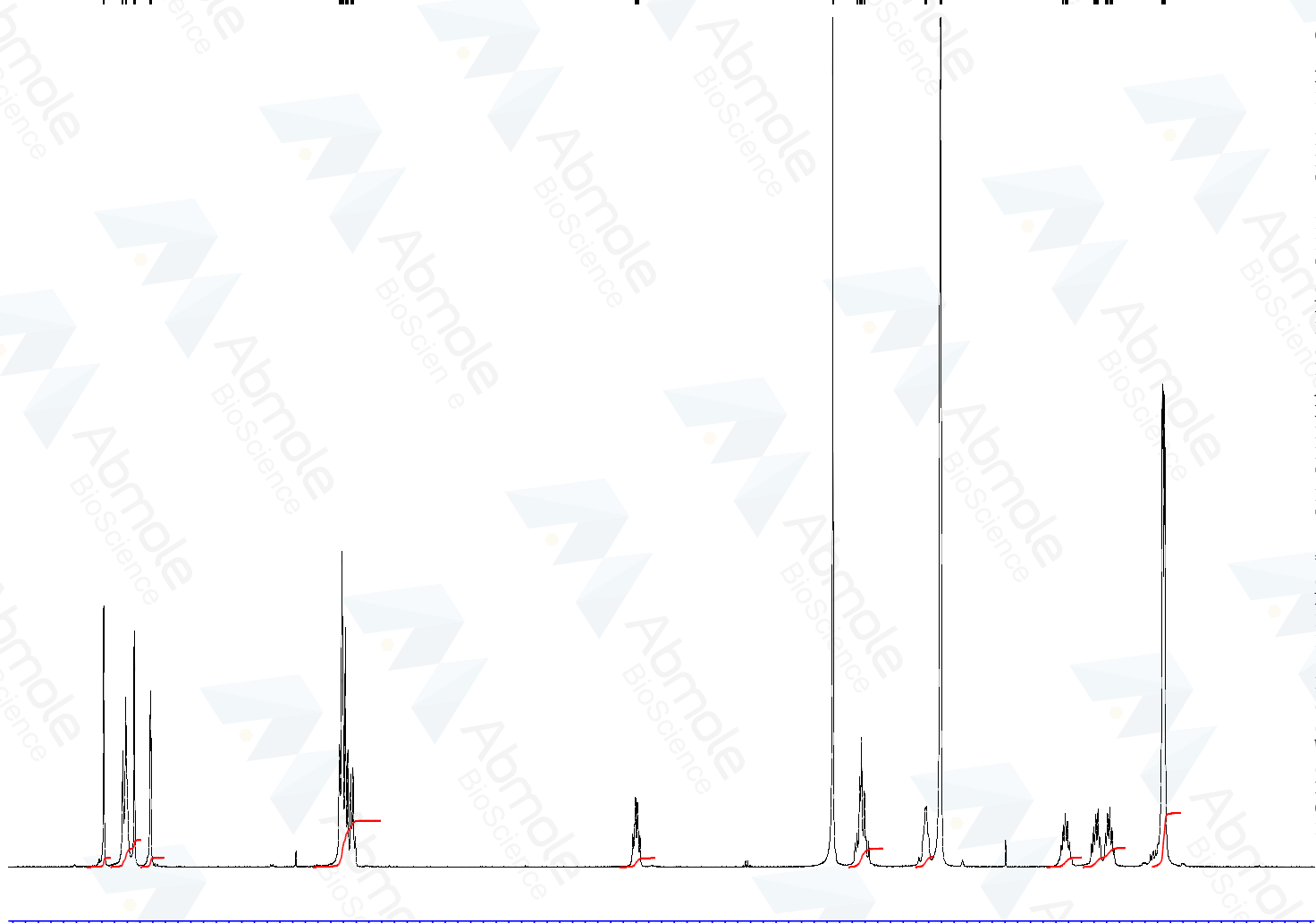


Current Data Parameters  
 NAME Bortezomib-01  
 EXPNO 1  
 PROCNO 1

F2 - Acquisition Parameters  
 Date 20170228  
 Time 12.28  
 INSTRUM spect  
 PROBHD 5 mm PADUL 13C  
 PULPROG zg30  
 TD 65536  
 SOLVENT DMSO  
 NS 16  
 DS 2  
 SWH 8012.820 Hz  
 FIDRES 0.122266 Hz  
 AQ 4.0894465 sec  
 RG 158.27  
 DW 62.400 usec  
 DE 6.50 usec  
 TE 292.5 K  
 D1 1.00000000 sec  
 TD0 1

===== CHANNEL f1 =====  
 SFO1 400.1324710 MHz  
 NUC1 1H  
 P1 10.00 usec  
 PLW1 20.00000000 W

F2 - Processing parameters  
 SI 65536  
 SF 400.1300000 MHz  
 WDW EM  
 SSB 0  
 LB 0.30 Hz  
 GB 0  
 PC 1.00



9.5 9.0 8.5 8.0 7.5 7.0 6.5 6.0 5.5 5.0 4.5 4.0 3.5 3.0 2.5 2.0 1.5 1.0 0.5 ppm

1.00  
2.97  
1.02  
5.12  
1.00  
2.04  
1.13  
1.05  
2.09  
5.98