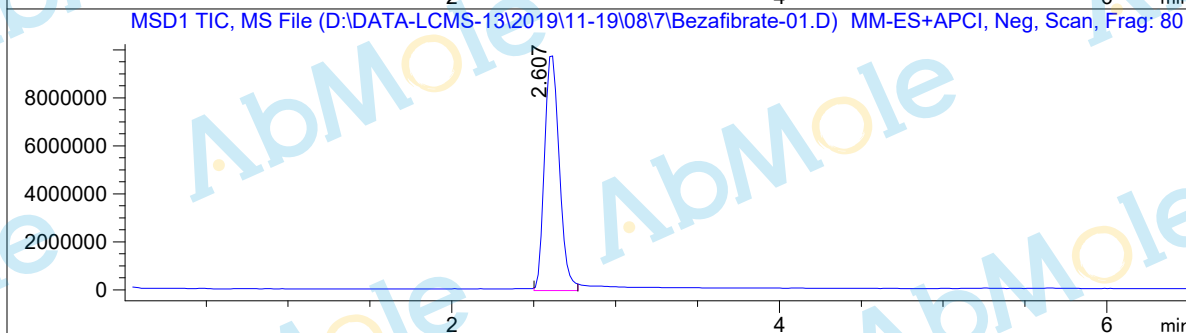
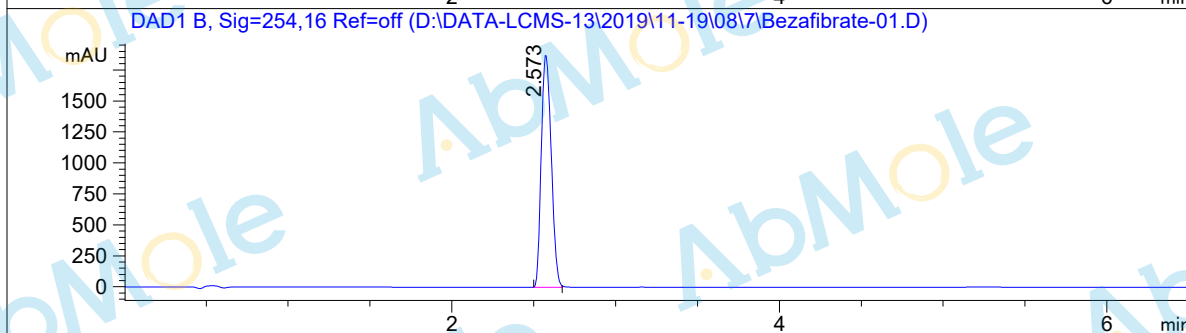
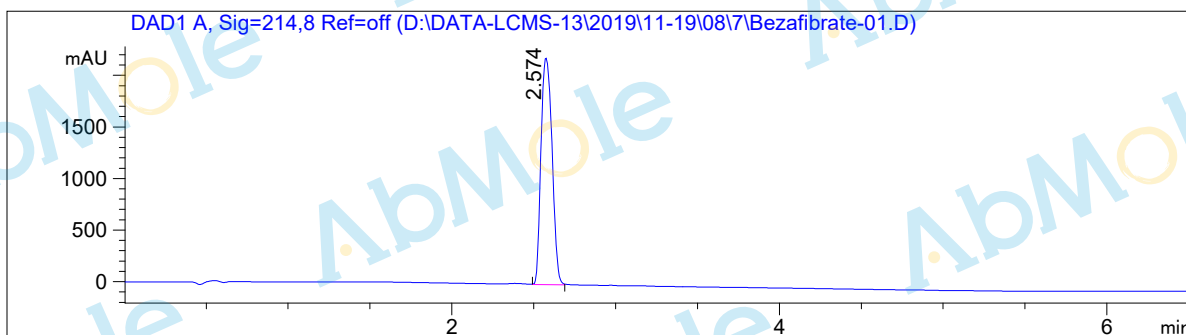


LC-MS Report

Sample Name : Bezafibrate-01
Data File : D:\DATA-LCMS-13\2019\11-19\08\7\Bezafibrate-01.D
Injection Date : Sat, 9. Nov. 2019 Inj. Vol. : 5ul
Acq Operator : LCMS-13 Location : Vial 12
Acq. Method : D:\data-lcms-13\2019\11-19\08\7\N-05-95-C2.M
Method Info. : column:C18;column size:4.6*50mm ;mobile phase:B (ACN)
A(0.02%NH4Ac); gradient(B%)!as Acq.Method above



Integration Results

Signal 1: DAD1 A, Sig=214,8 Ref=off

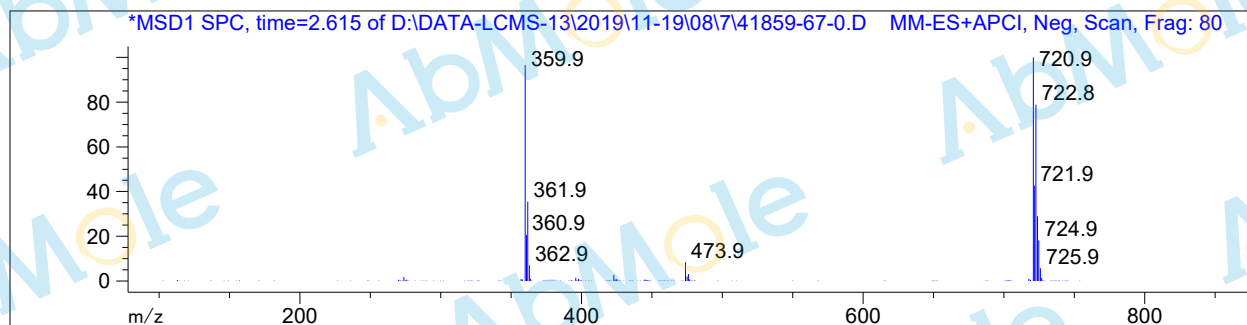
#	R.T.	Type	Height	Height%	Width	Area	Area %
1	2.574	FM	2201.216	100.000	0.078	10312.476	100.000

Signal 2: DAD1 B, Sig=254,16 Ref=off

#	R.T.	Type	Height	Height%	Width	Area	Area %
1	2.573	MF	1885.810	100.000	0.070	7935.785	100.000

Signal 3: MSD1 TIC, MS File

#	R.T.	Type	Height	Height%	Width	Area	Area %
1	2.607	MM	9.996e+006	100.000	0.103	6.161e+007	100.000



*** End of Report ***