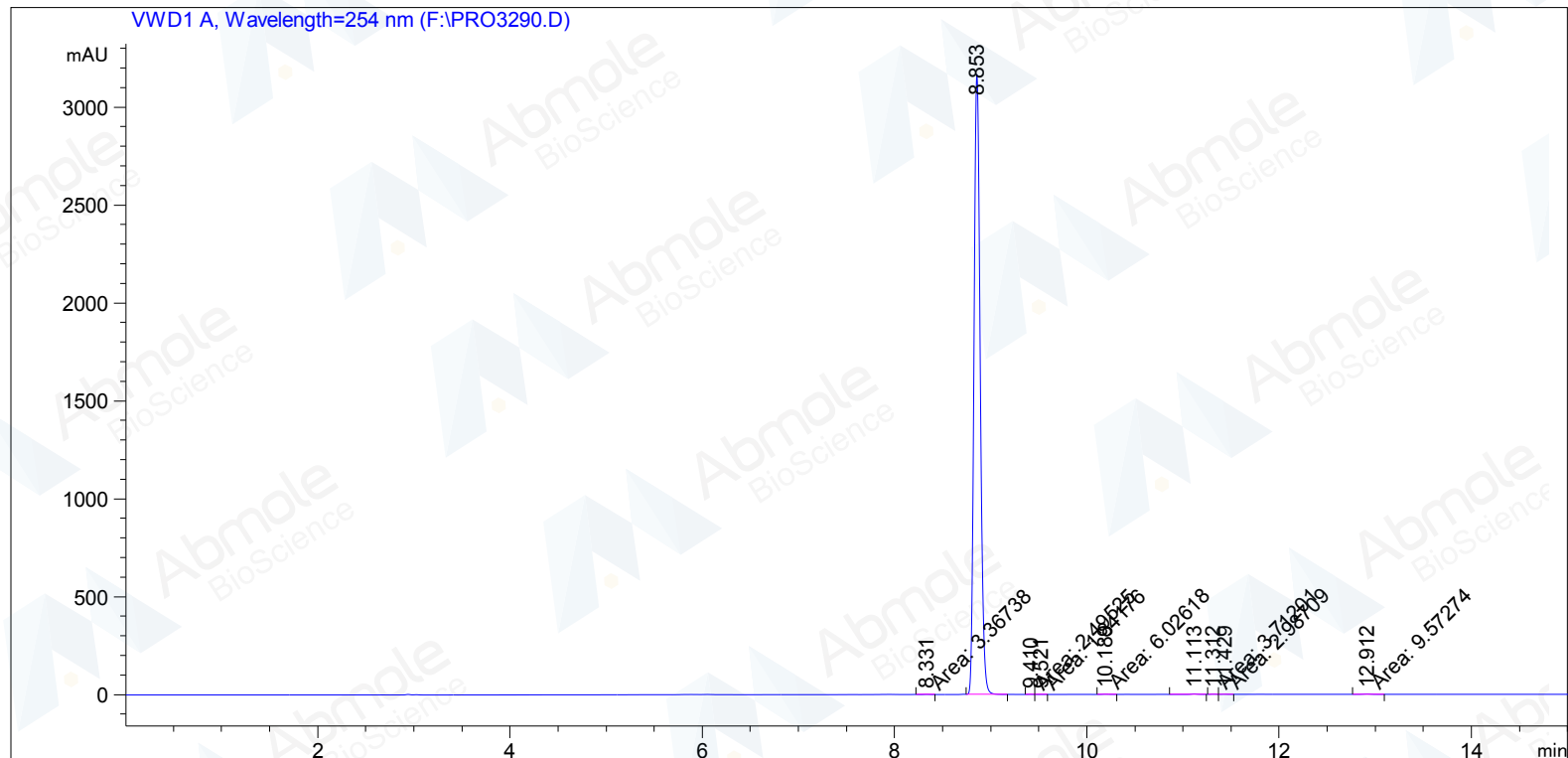


```

=====
Acq. Operator   : System                      Seq. Line :    4
Acq. Instrument : LC1260                     Location  : Vial 28
Injection Date  : 9/14/2016 3:55:36 PM      Inj       :    1
                                                Inj Volume: 0 µl
Different Inj Volume from Sequence !      Actual Inj Volume : 3 µl
Acq. Method     : E:\DATA\Data\20160914\20130913-01 2016-09-14 14-43-05\10-90 AD 254 15MIN.M
Last changed    : 9/14/2016 2:43:05 PM by System
Analysis Method : D:\PUBLIC\20160912\DEF_LC 2016-09-12 15-27-21\CHENYUAN-20160912-3.D\DA.M (5-95
                                                6MIN.M)
Last changed    : 9/12/2016 3:42:48 PM
    
```



Area Percent Report

```

=====
Sorted By      :      Signal
Multiplier     :      1.0000
Dilution      :      1.0000
Use Multiplier & Dilution Factor with ISTDs
    
```

Signal 1: VWD1 A, Wavelength=254 nm

Peak #	RetTime [min]	Type	Width [min]	Area [mAU*s]	Height [mAU]	Area %
1	8.331	MM	0.0659	3.36738	8.51092e-1	0.0236
2	8.853	VV	0.0705	1.42555e4	3169.09741	99.7158
3	9.410	MF	0.0710	2.49525	5.85745e-1	0.0175

Peak #	RetTime [min]	Type	Width [min]	Area [mAU*s]	Height [mAU]	Area %
4	9.521	FM	0.0769	1.84176	3.99306e-1	0.0129
5	10.189	MM	0.0867	6.02618	1.15903	0.0422
6	11.113	VV	0.0702	10.63377	2.24950	0.0744
7	11.312	MF	0.0619	3.71201	9.99678e-1	0.0260
8	11.429	FM	0.0775	2.98709	6.42011e-1	0.0209
9	12.912	MM	0.0984	9.57274	1.62185	0.0670

Totals : 1.42962e4 3177.60562

=====
*** End of Report ***