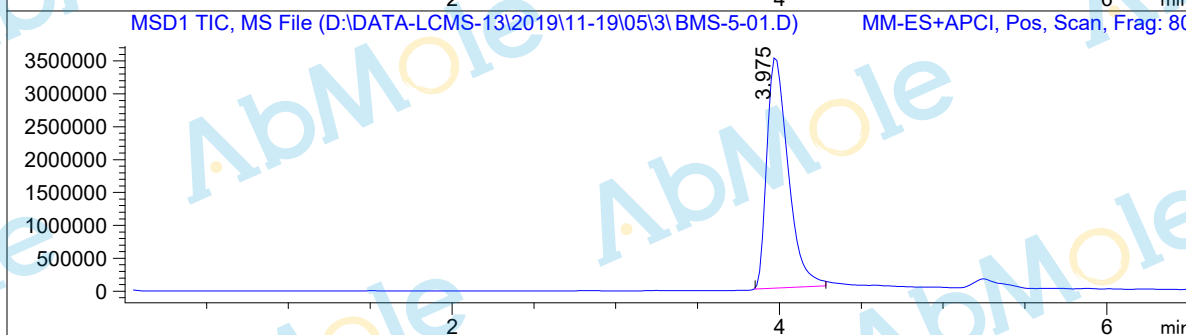
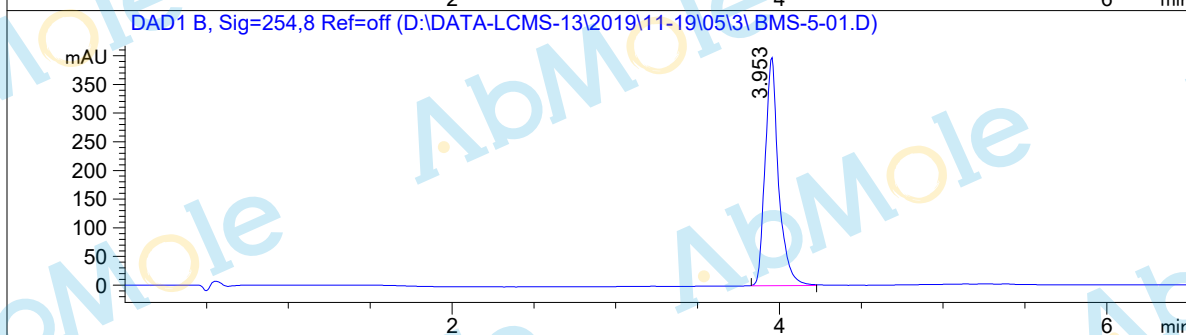
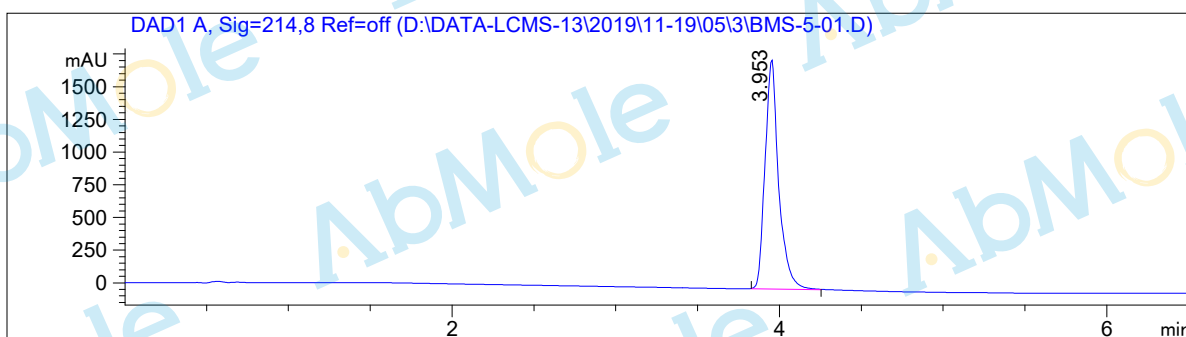


LC-MS Report

Sample Name : BMS-5-01
Data File : D:\DATA-LCMS-13\2019\11-19\05\3\BMS-5-01.D
Injection Date : Wed, 6. Nov. 2019 Inj. Vol. : 5ul
Acq Operator : LCMS-13 Location : Vial 80
Acq. Method : D:\data-lcms-13\2019\11-19\05\3\P-05-95.M
Method Info. : column:C18;column size:4.6*50mm ;mobile phase:B (ACN)
A(0.02%NH4Ac); gradient(B%)!as Acq.Method above



Integration Results

Signal 1: DAD1 A, Sig=214,8 Ref=off

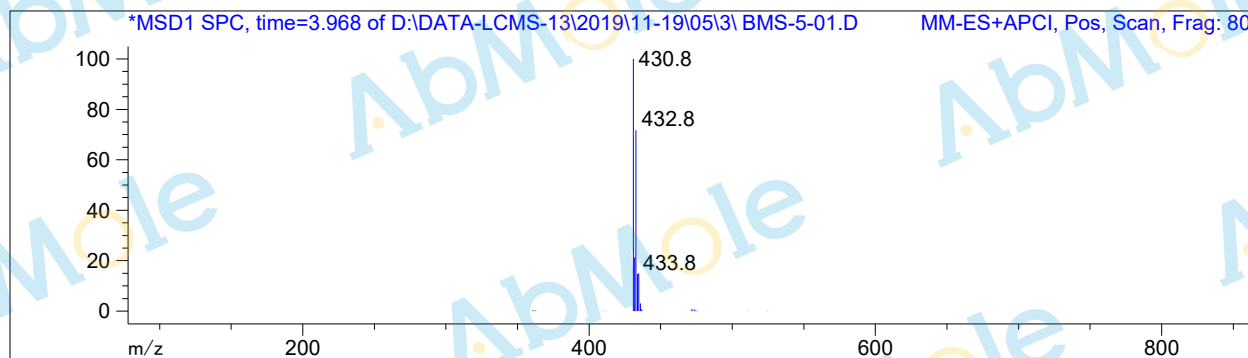
#	R.T.	Type	Height	Height%	Width	Area	Area %
1	3.953	BB	1753.941	100.000	0.084	10157.317	100.000

Signal 2: DAD1 B, Sig=254,8 Ref=off

#	R.T.	Type	Height	Height%	Width	Area	Area %
1	3.953	BB	398.421	100.000	0.082	2270.248	100.000

Signal 3: MSD1 TIC, MS File

#	R.T.	Type	Height	Height%	Width	Area	Area %
1	3.975	BB	3.528e+006	100.000	0.137	3.173e+007	100.000



*** End of Report ***