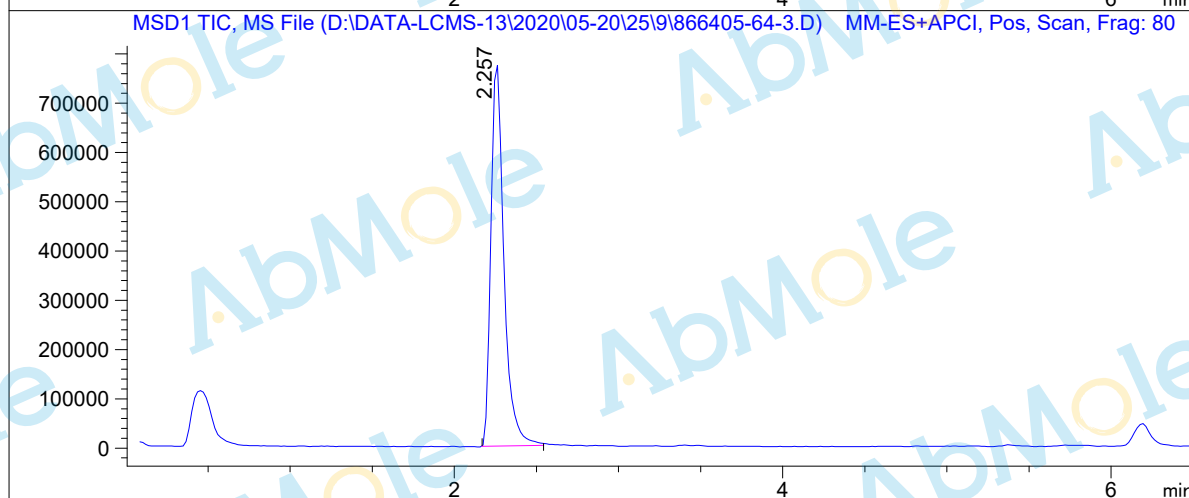
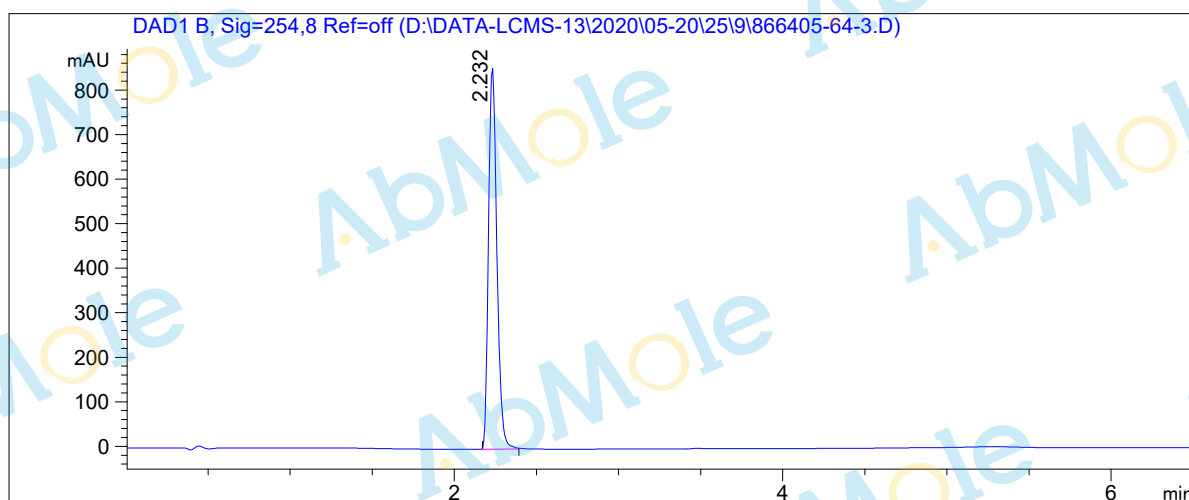


LCMS Report

Sample Name : BML-275-02
Data File : D:\DATA-LCMS-13\2020\05-20\25\9\866405-64-3.D
Injection Date : Mon, 25. May. 2020 Inj. Vol. : 2ul
Acq Operator : LCMS-13 Location : Vial 82
Acq. Method : D:\data-lcms-13\2020\05-20\25\9\P-05-95-TFA.M
Method Info. : column:Xbridge C18 5um 4.6*50mm ;mobile phase:B(ACN)
A(0.05%TFA) ; gradient(B%)!as Acq.Method above



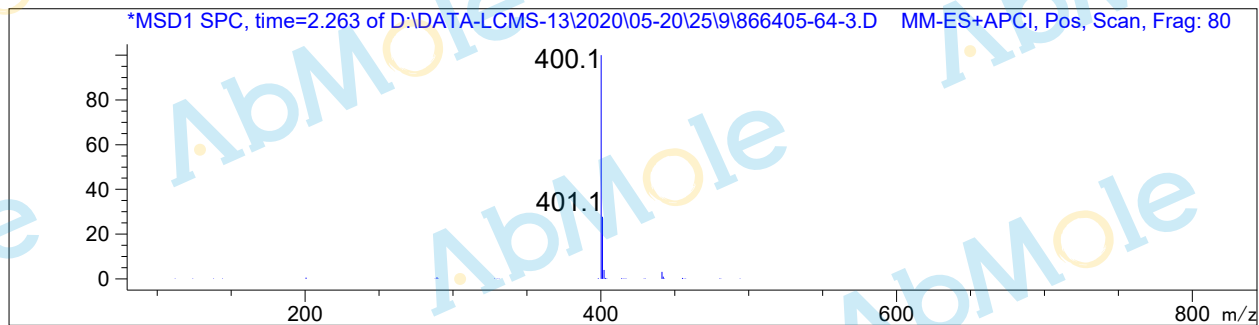
Integration Results

Signal 1: DAD1 B, Sig=254,8 Ref=off

#	R.T.	Type	Height	Height%	Width	Area	Area %
1	2.232	BB	857.519	100.000	0.055	3038.594	100.000

Signal 2: MSD1 TIC, MS File

#	R.T.	Type	Height	Height%	Width	Area	Area %
1	2.257	BB	782603.000	100.000	0.085	4.281e+006	100.000



*** End of Report ***