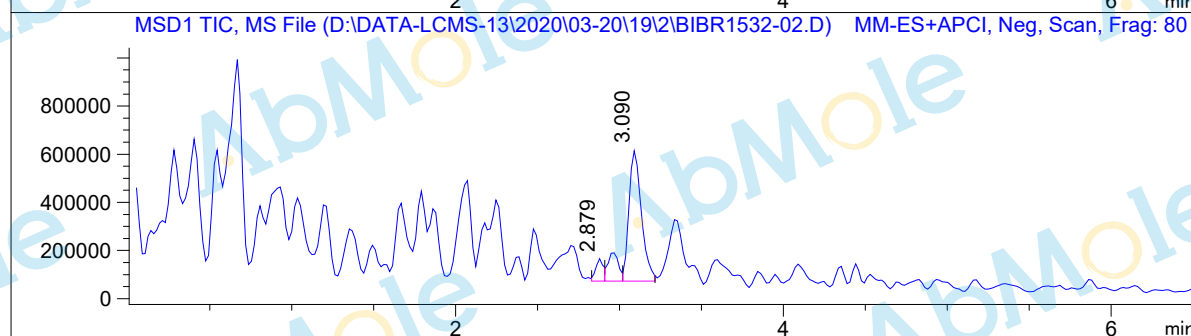
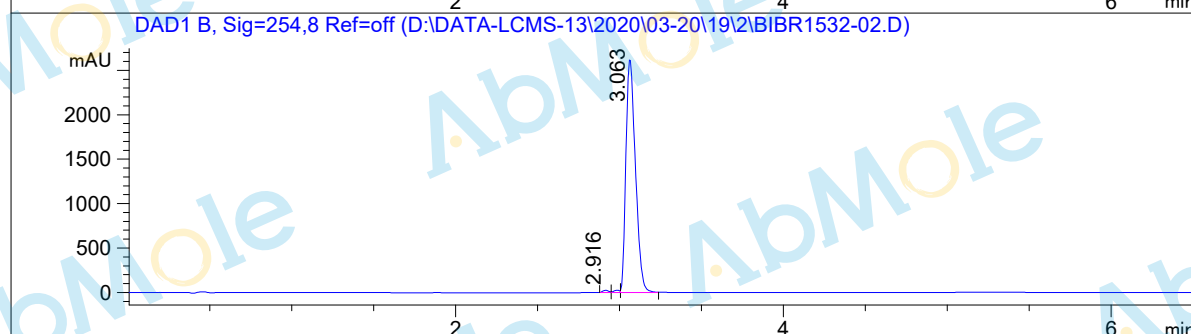
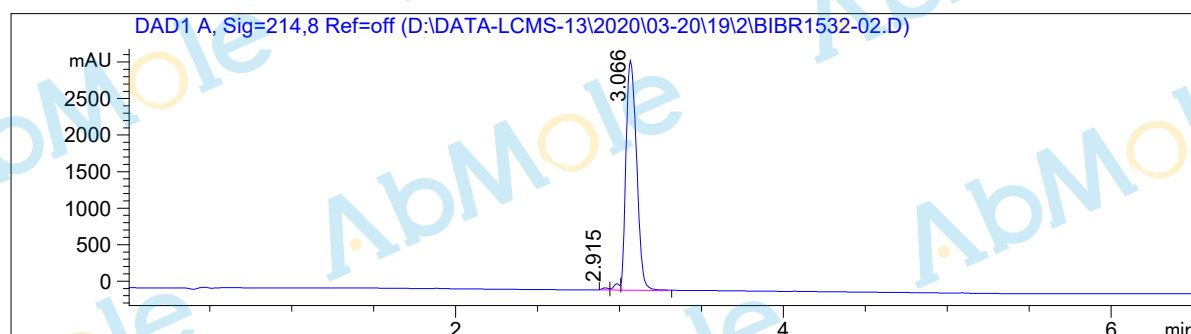


LCMS Report

Sample Name : BIBR1532-02
Data File : D:\DATA-LCMS-13\2020\03-20\19\2\BIBR1532-02.D
Injection Date : Thu, 19. Mar. 2020 Inj. Vol. : 3ul
Acq Operator : LCMS-13 Location : Vial 61
Acq. Method : D:\data-lcms-13\2020\03-20\19\2\N-05-95.M
Method Info. : column:Ecclipse XDB-C18 5um 4.6*150mm ;mobile phase:B(ACN) A(0.02%NH4AC); gradient(B%)!as Acq.Method above



Integration Results

Signal 1: DAD1 A, Sig=214,8 Ref=off

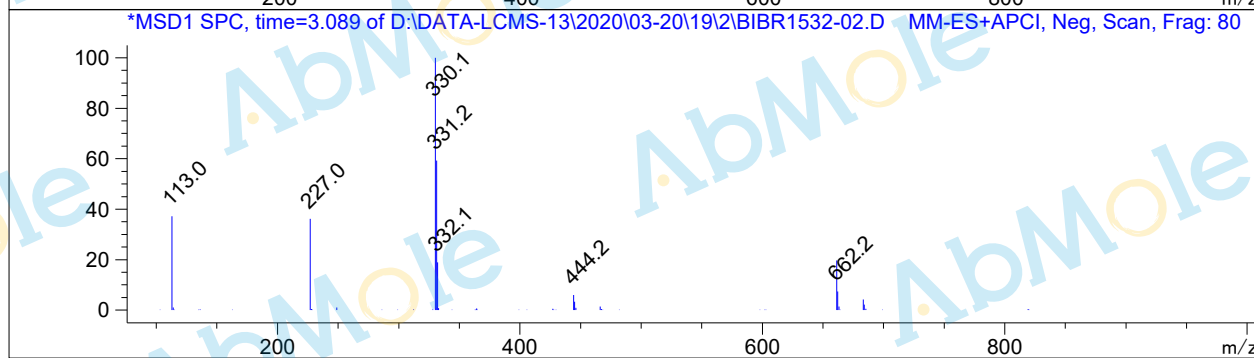
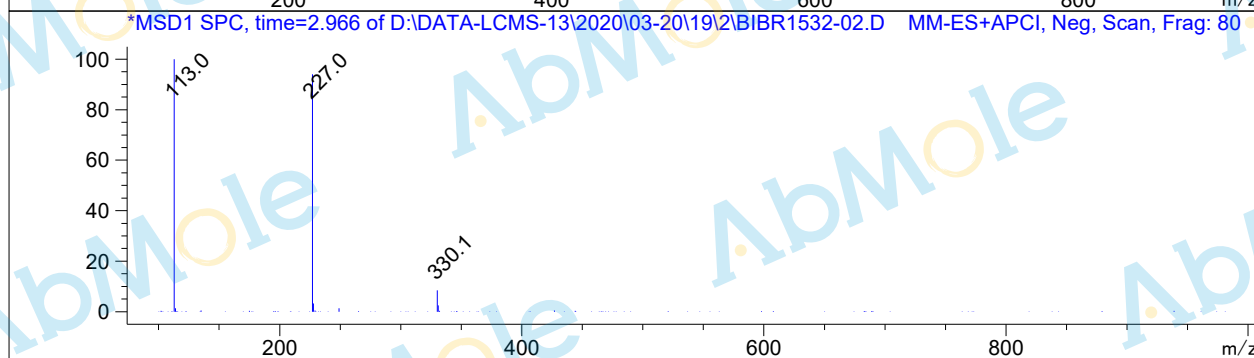
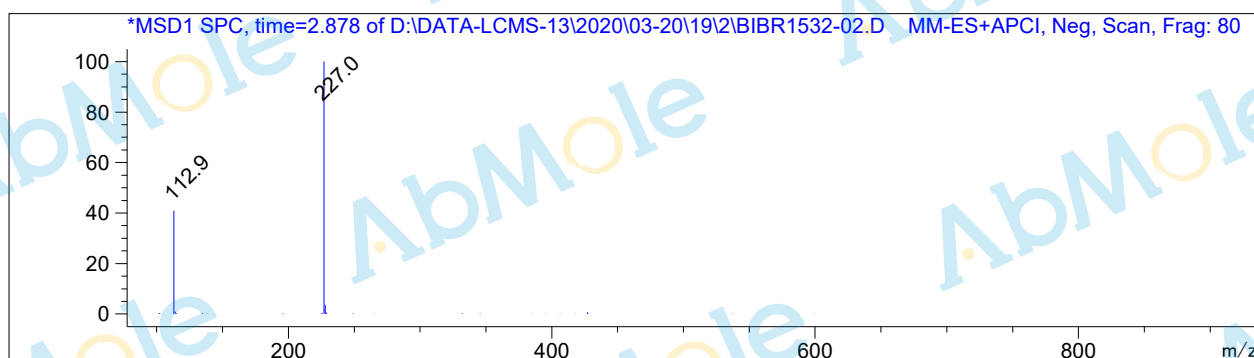
#	R.T.	Type	Height	Height%	Width	Area	Area %
1	2.915	MF	28.875	0.885	0.044	75.815	0.527
2	2.984	FM	86.255	2.644	0.047	244.786	1.701
3	3.066	FM	3147.666	96.471	0.075	14072.858	97.773

Signal 2: DAD1 B, Sig=254,8 Ref=off

#	R.T.	Type	Height	Height%	Width	Area	Area %
1	2.916	MF	22.859	0.849	0.041	56.290	0.528
2	2.984	FM	24.484	0.909	0.042	61.452	0.576
3	3.063	FM	2646.018	98.242	0.066	10550.083	98.896

Signal 3: MSD1 TIC, MS File

#	R.T.	Type	Height	Height%	Width	Area	Area %
1	2.879	MF	94976.016	12.474	0.053	301006.719	8.187
2	2.959	MF	119266.242	15.664	0.078	556537.188	15.137
3	3.090	FM	547152.438	71.862	0.086	2.819e+006	76.676



*** End of Report ***