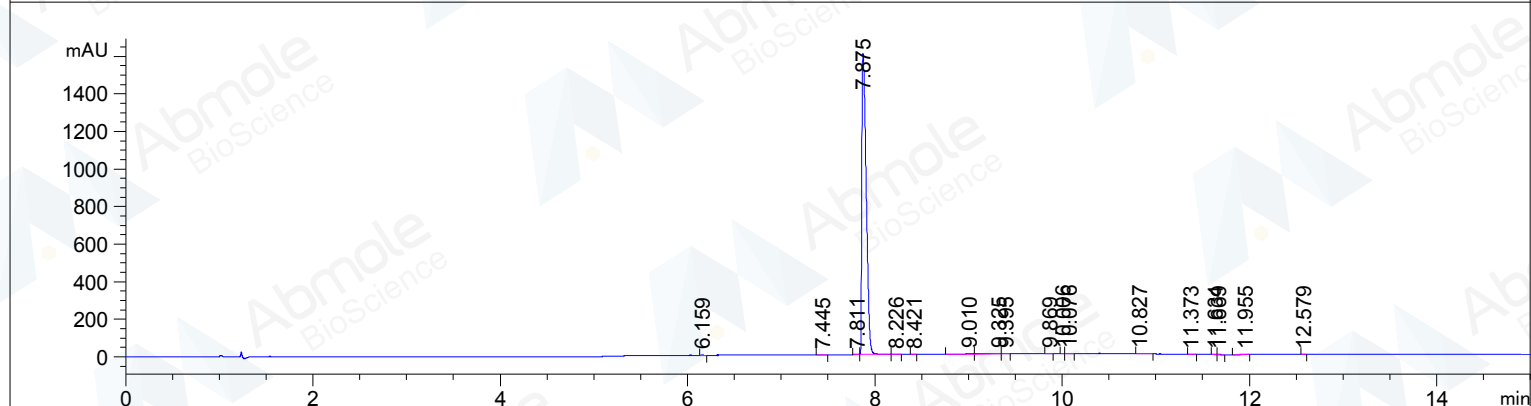
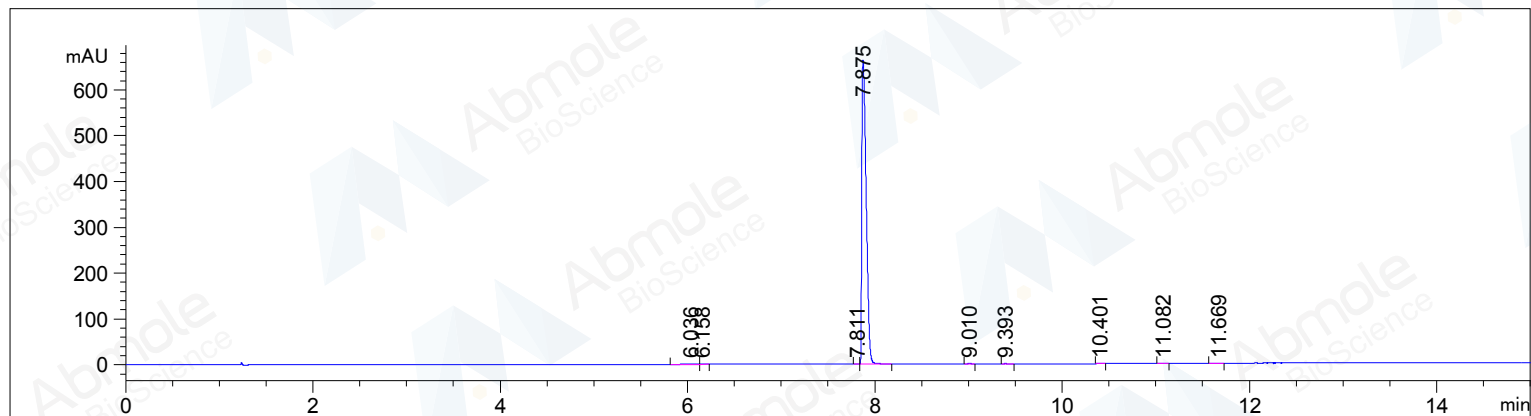


```

=====
Acq. Operator   : AbMole                               Seq. Line :   14
Acq. Instrument : HPLC 1260                           Location  : Vial 34
Injection Date  : 2014-6-3 22:51:53                   Inj       :    1
                                                    Actual Inj Volume : 1.500 µl
Acq. Method    : D:\HPLC\DATA\2016\ 2016-06-03 18-39-26\ -ZBL.M
Last changed   : 2016-6-3 18:39:09 : Xu Hui
Analysis Method : D:\HPLC\2016.06.03\ -ZBL.M
Last changed   : 2016-6-10 17:30:47 : hu li
                (modified after loading)
Methods Information : XDB-C18 4.6mm*150mm 5um
=====
  
```



=====
 Area Percent Report
 =====

```

Sorted By      :      Signal
Multiplier     :      1.0000
Dilution       :      1.0000
Use Multiplier & Dilution Factor with ISTDs
  
```

Signal 1: DAD1 B, Sig=254,4 Ref=off

Peak #	RetTime [min]	Type	Width [min]	Area [mAU*s]	Height [mAU]	Area %
1	6.036	BV	0.1029	2.85383	3.30045e-1	0.1317
2	6.158	VB	0.0318	4.48253e-1	1.87941e-1	0.0207
3	7.811	BB	0.0240	3.81107e-1	2.53528e-1	0.0176
4	7.875	BB	0.0510	2157.54053	663.03619	99.6019
5	9.010	BB	0.0328	1.08842	4.74515e-1	0.0502

Peak #	RetTime [min]	Type	Width [min]	Area [mAU*s]	Height [mAU]	Area %
6	9.393	BB	0.0350	6.88533e-1	2.92210e-1	0.0318
7	10.401	BB	0.0379	6.30007e-1	2.23607e-1	0.0291
8	11.082	BB	0.0389	1.35169	5.28236e-1	0.0624
9	11.669	BB	0.0539	1.18083	2.67825e-1	0.0545

Totals: 2166.16319 665.59410

Signal 2: DAD1 C, Sig=214,4 Ref=off

Peak #	RetTime [min]	Type	Width [min]	Area [mAU*s]	Height [mAU]	Area %
1	6.159	VB	0.0374	1.28043	4.68049e-1	0.0242
2	7.445	BB	0.0448	2.13662	7.36744e-1	0.0404
3	7.811	BB	0.0252	9.39239e-1	6.20571e-1	0.0178
4	7.875	BV	0.0517	5251.54932	1602.10608	99.3172
5	8.226	VB	0.0526	1.68698	4.09518e-1	0.0319
6	8.421	BB	0.0254	2.00688e-1	1.06841e-1	3.795e-3
7	9.010	BV	0.0548	5.42973	1.36874	0.1027
8	9.325	VV	0.0844	1.42997	2.01305e-1	0.0270
9	9.395	VB	0.0355	1.83909	8.26248e-1	0.0348
10	9.869	BB	0.0300	4.86969e-1	2.22707e-1	9.210e-3
11	10.006	BB	0.0215	1.93825e-1	1.15935e-1	3.666e-3
12	10.076	BV	0.0417	2.78880	9.38052e-1	0.0527
13	10.827	BB	0.0415	3.01209	1.06474	0.0570
14	11.373	BB	0.0347	1.30823	5.41048e-1	0.0247
15	11.634	BV	0.0293	3.29821	1.65313	0.0624
16	11.669	VB	0.0316	3.65548	1.66542	0.0691
17	11.955	BV	0.0556	6.03758	1.32772	0.1142
18	12.579	VB	0.0342	3.82231e-1	1.40642e-1	7.229e-3

Totals: 5287.65547 1614.51348

=====
*** End of Report ***