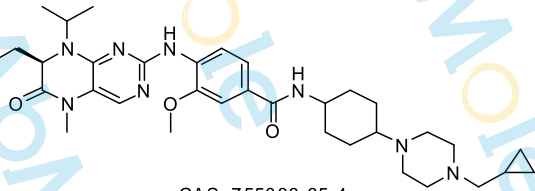


8.549
8.528
7.673
7.609
7.428
7.424
7.267
7.241
7.237
7.220
7.216
5.896
5.876
4.736
4.719
4.702
4.301
4.293
4.282
4.273
3.969
3.935
3.916
3.907
3.325
2.304
2.277
2.261
2.154
2.151
2.170
2.002
1.972
1.934
1.907
1.880
1.868
1.825
1.762
1.743
1.707
1.472
1.447
1.430
1.368
1.351
1.279
1.254
0.885
0.866
0.847
0.538
0.524
0.513
0.504
0.493
0.128
0.115
0.102
0.090
-0.001

Sample Name:BI 6727-01

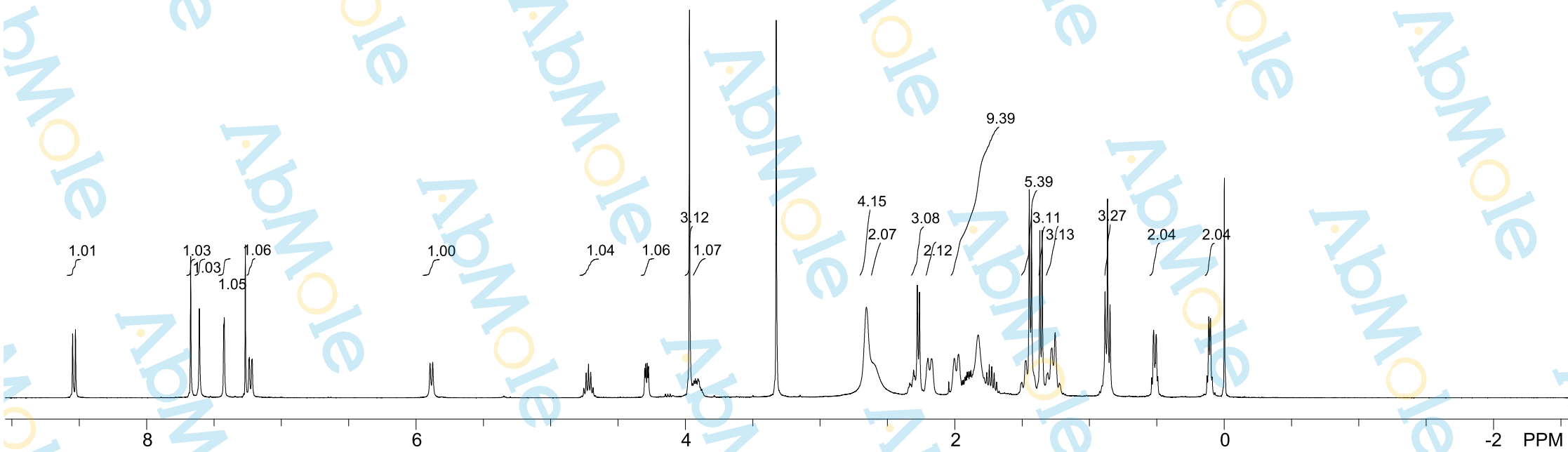
Chemical Formula: C₃₄H₅₀N₈O₃

Molecular Weight: 618.81



CAS: 755038-65-4

CDCl₃, 400 MHz



8 6 4 2 0 -2 PPM