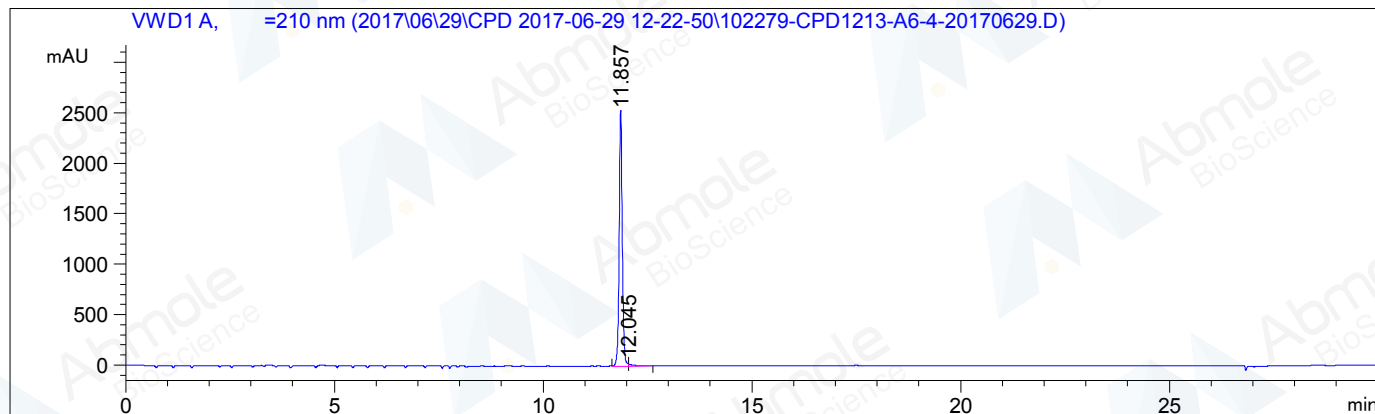


=====

Acq. Operator	: xuweiwei	Seq. Line	: 8
Acq. Instrument	: LC 1	Location	: Vial 27
Injection Date	: 2017/6/29 16:00:41	Inj	: 1
		Inj Volume	: 5.0 µl
Different Inj Volume from Sequence !		Actual Inj Volume	: 2.0 µl
Acq. Method	: E:\DATA\2017\06\29\CPD 2017-06-29 12-22-50\BAY-1895344.M		
Last changed	: 2017/5/16 14:40:59 : xuweiwei		
Analysis Method	: E:\PUBLIC\BAY-1895344.M		
Last changed	: 2017/6/29 16:43:57 : xuweiwei (modified after loading)		

Method Information : CH Acid.M



=====
Area Percent Report
=====

Sorted By : Signal
Multiplier : 1.0000
Dilution : 1.0000
Use Multiplier & Dilution Factor with ISTDs

Signal 1: VWD1 A, Wavelength=210 nm

Peak #	RetTime [min]	Type	Width [min]	Area mAU *s	Height [mAU]	Area %
1	11.857	MF	0.0867	1.32162e4	2540.44629	98.6948
2	12.045	FM	0.1409	174.77762	20.67368	1.3052

Totals : 1.33909e4 2561.11997

=====
*** End of Report ***
=====