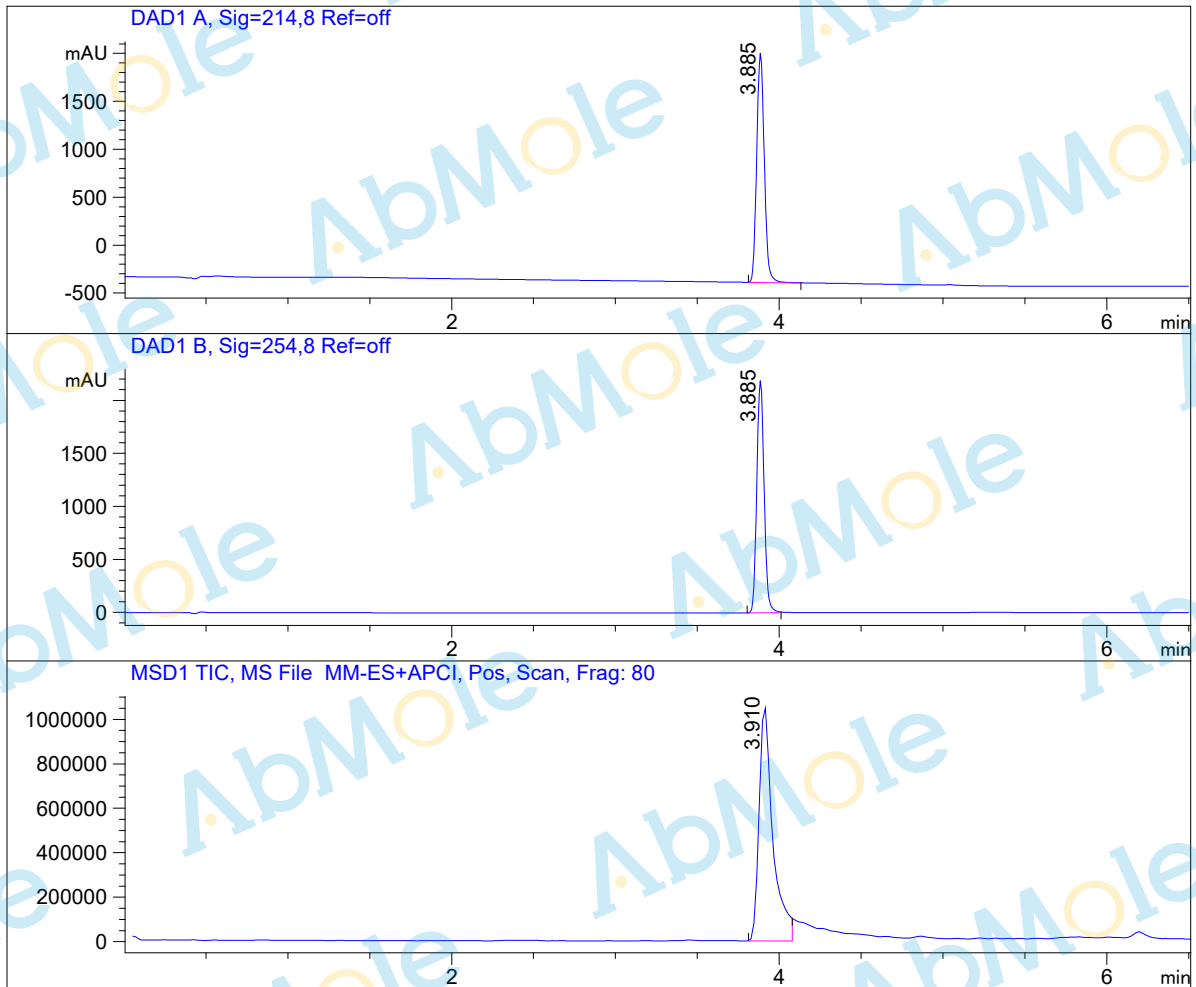


LC-MS Report

Sample Name : Apilimod-01
Data File : C:\CHEM32\1\DATA\19\6\Apilimod-01.D
Injection Date : Wed, 8. Jan. 2020 Inj. Vol. : 5ul
Acq Operator : LCMS-13 Location : Vial 71
Acq. Method : C:\Chem32\1\DATA\19\6\P-05-95.M
Method Info. : column:C18;column size:4.6*50mm ;mobile phase:B (ACN)
A(0.02%NH4Ac); gradient(B%)!as Acq.Method above



Integration Results

Signal 1: DAD1 A, Sig=214,8 Ref=off

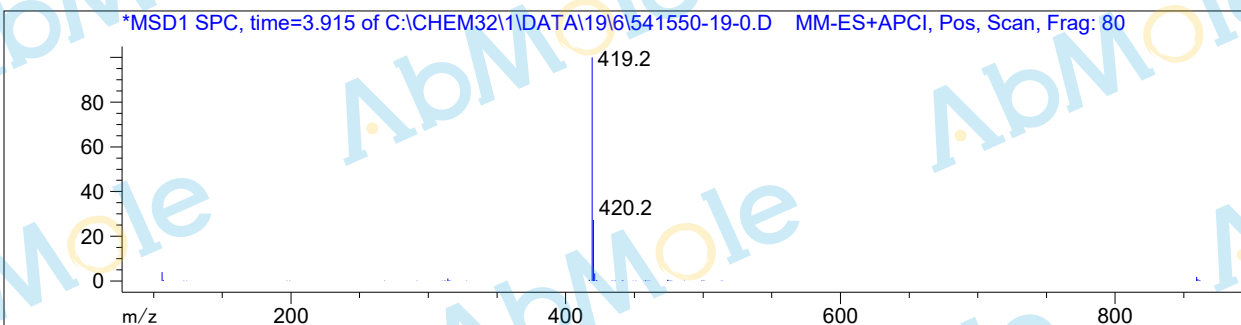
#	R.T.	Type	Height	Height%	Width	Area	Area %
1	3.885	MF	2400.757	100.000	0.054	7750.155	100.000

Signal 2: DAD1 B, Sig=254,8 Ref=off

#	R.T.	Type	Height	Height%	Width	Area	Area %
1	3.885	MF	2199.124	100.000	0.052	6841.065	100.000

Signal 3: MSD1 TIC, MS File

#	R.T.	Type	Height	Height%	Width	Area	Area %
1	3.910	MM	1.071e+006	100.000	0.097	6.203e+006	100.000



*** End of Report ***