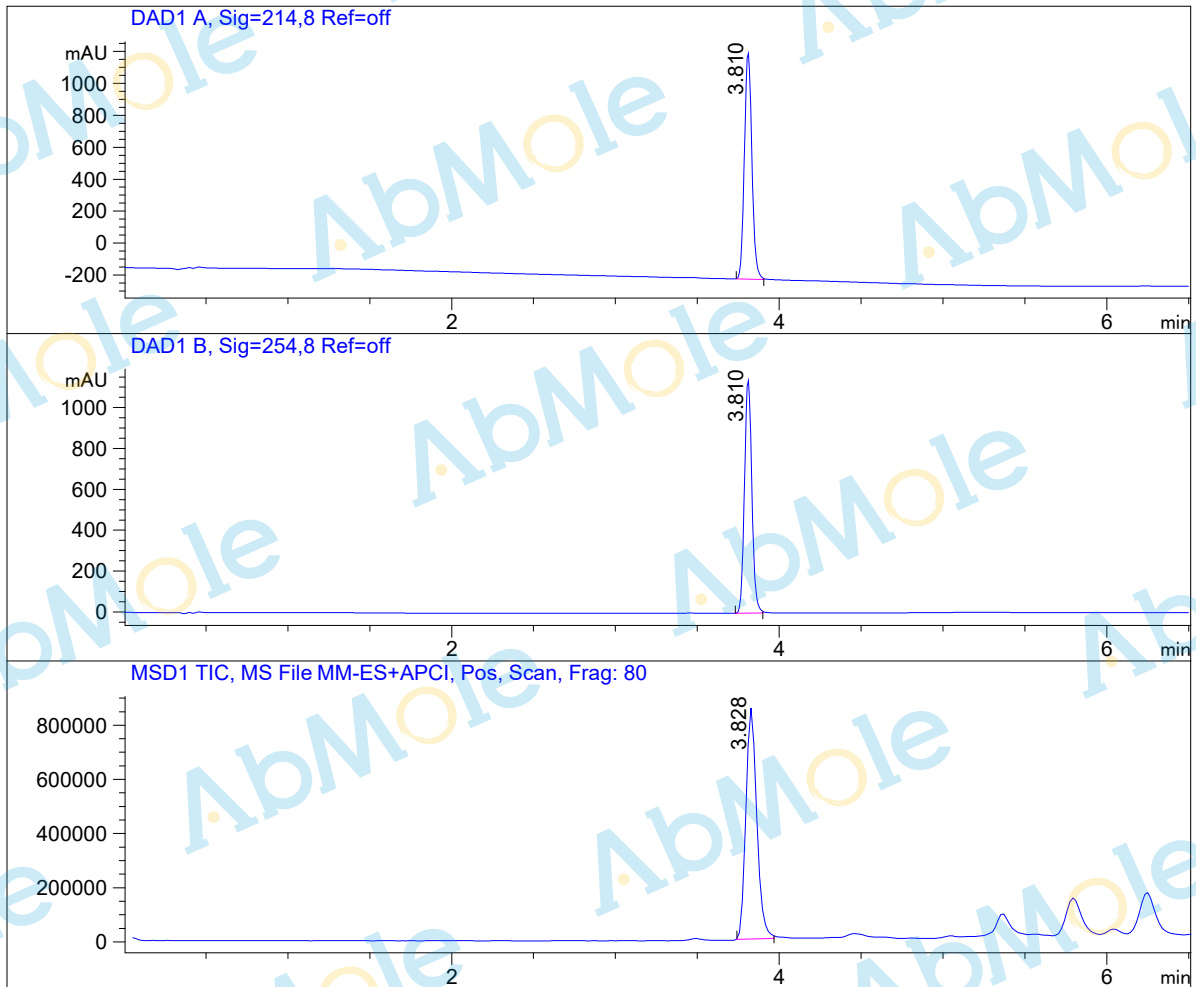


LC-MS Report

Sample Name : Apatinib mesylate-02
Data File : D:\DATA-LCMS-13\2019\11-19\29\4\Apatinib mesylate-02.D
Injection Date : Fri, 29. Nov. 2019 Inj. Vol. : 3ul
Acq Operator : LCMS-13 Location : Vial 35
Acq. Method : D:\data-lcms-13\2019\11-19\29\4\P-05-95.M
Method Info. : column:C18;column size:4.6*50mm ;mobile phase:B (ACN)
A(0.02%NH4Ac); gradient(B%)!as Acq.Method above



Integration Results

Signal 1: DAD1 A, Sig=214,8 Ref=off

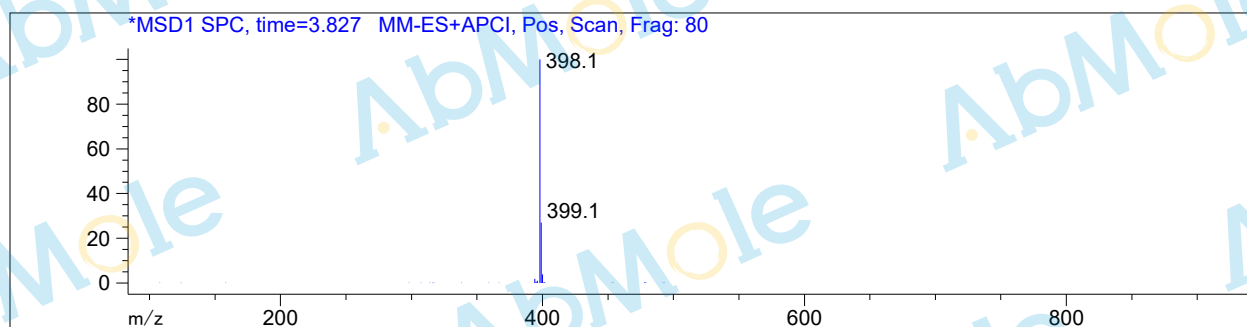
#	R.T.	Type	Height	Height%	Width	Area	Area %
1	3.810	MF	1426.426	100.000	0.053	4547.079	100.000

Signal 2: DAD1 B, Sig=254,8 Ref=off

#	R.T.	Type	Height	Height%	Width	Area	Area %
1	3.810	MF	1145.983	100.000	0.052	3586.033	100.000

Signal 3: MSD1 TIC, MS File

#	R.T.	Type	Height	Height%	Width	Area	Area %
1	3.828	BB	853115.438	100.000	0.070	3.946e+006	100.000



*** End of Report ***