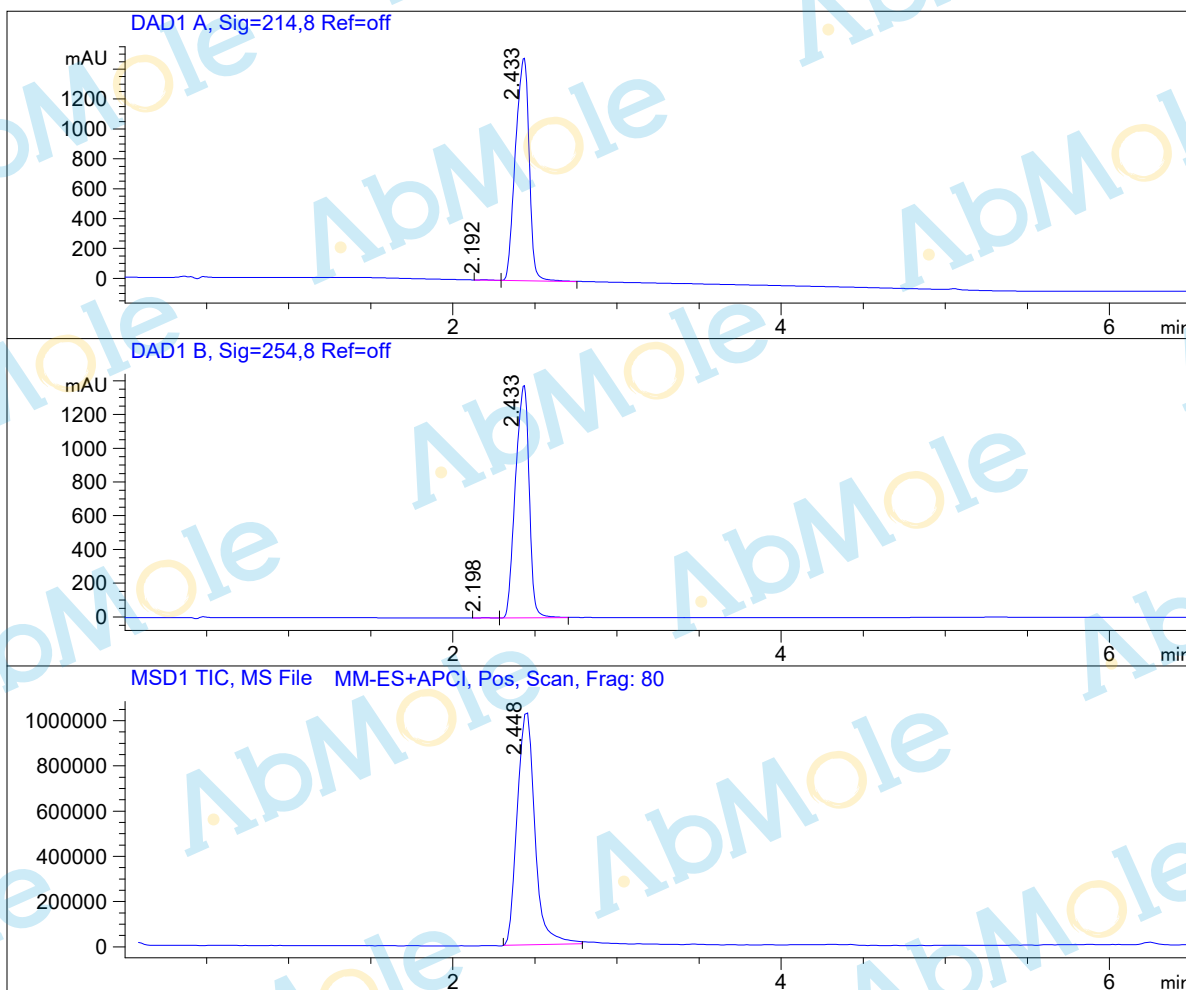


LC-MS Report

Sample Name : Amonafide-01
Data File : C:\CHEM32\1\DATA\19\6\Amonafide-01.D
Injection Date : Wed, 8. Jan. 2020 Inj. Vol. : 3ul
Acq Operator : LCMS-13 Location : Vial 73
Acq. Method : C:\Chem32\1\DATA\19\6\P-05-95.M
Method Info. : column:C18;column size:4.6*50mm ;mobile phase:B (ACN)
A(0.02%NH4Ac); gradient(B%)!as Acq.Method above



Integration Results

Signal 1: DAD1 A, Sig=214,8 Ref=off

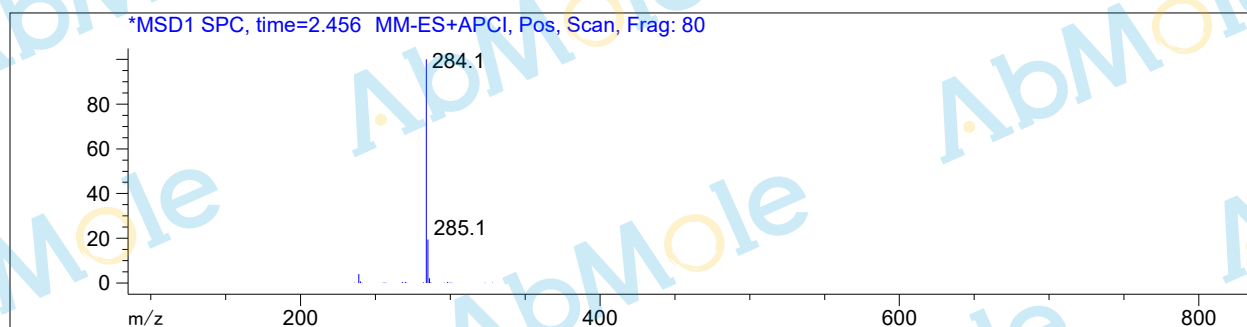
#	R.T.	Type	Height	Height%	Width	Area	Area %
1	2.192	BV	2.460	0.164	0.063	10.251	0.119
2	2.433	VB	1493.735	99.836	0.097	8632.688	99.881

Signal 2: DAD1 B, Sig=254,8 Ref=off

#	R.T.	Type	Height	Height%	Width	Area	Area %
1	2.198	BV	2.346	0.170	0.061	9.507	0.119
2	2.433	VB	1381.568	99.830	0.097	7974.864	99.881

Signal 3: MSD1 TIC, MS File

#	R.T.	Type	Height	Height%	Width	Area	Area %
1	2.448	BB	1.041e+006	100.000	0.118	7.694e+006	100.000



*** End of Report ***