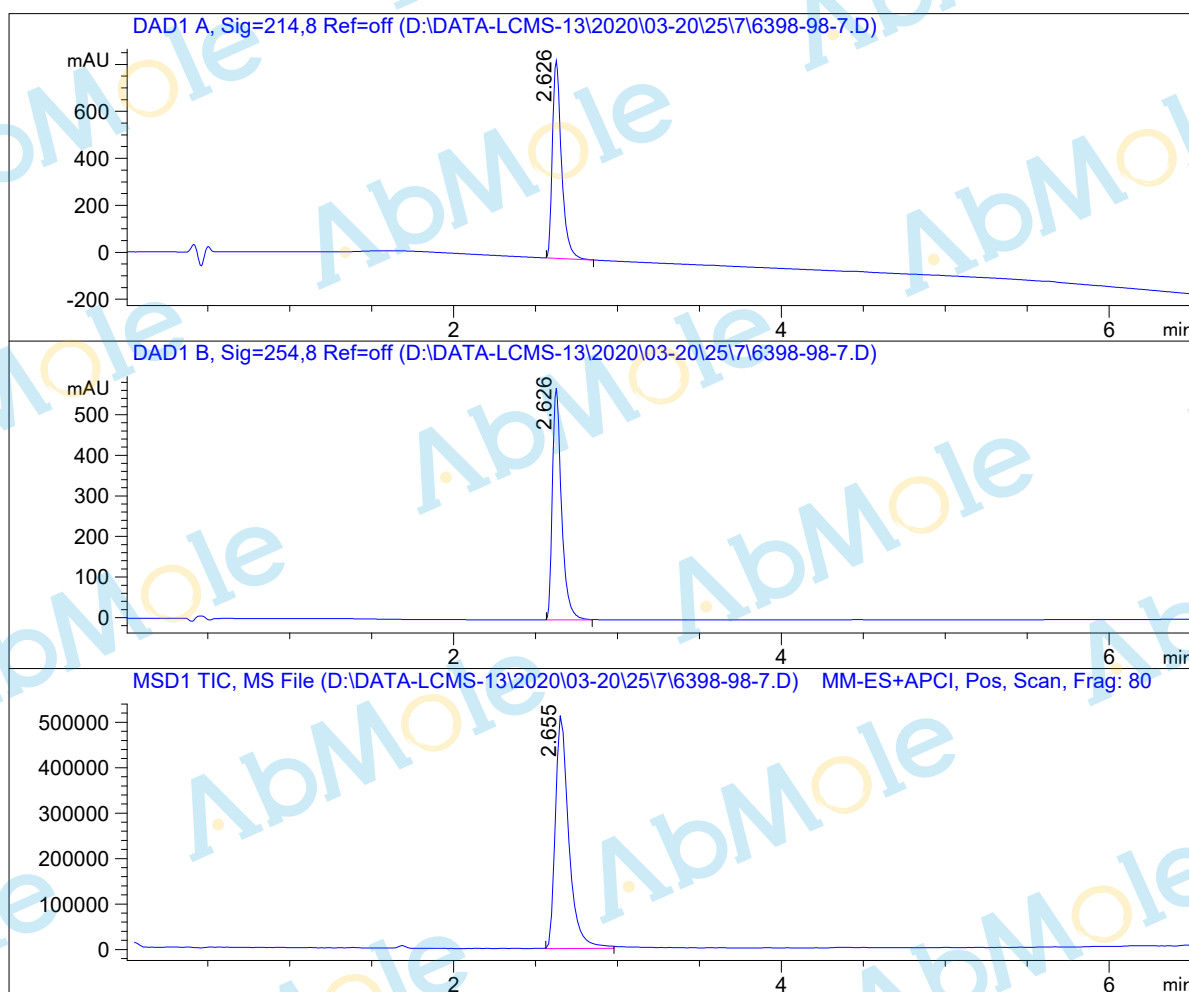


LCMS Report

Sample Name : Amodiaquin dihydrochloride dihydrate-01
Data File : D:\DATA-LCMS-13\2020\03-20\25\7\6398-98-7.D
Injection Date : Wed, 25. Mar. 2020 Inj. Vol. : 2ul
Acq Operator : LCMS-13 Location : Vial 11
Acq. Method : D:\data-lcms-13\2020\03-20\25\7\P-05-60-TFA.M
Method Info. : column:Xbridge C18 5um 4.6*50mm ;mobile phase:B (ACN)
A(0.05%TFA) ; gradient (B%)!as Acq.Method above



Integration Results

Signal 1: DAD1 A, Sig=214,8 Ref=off

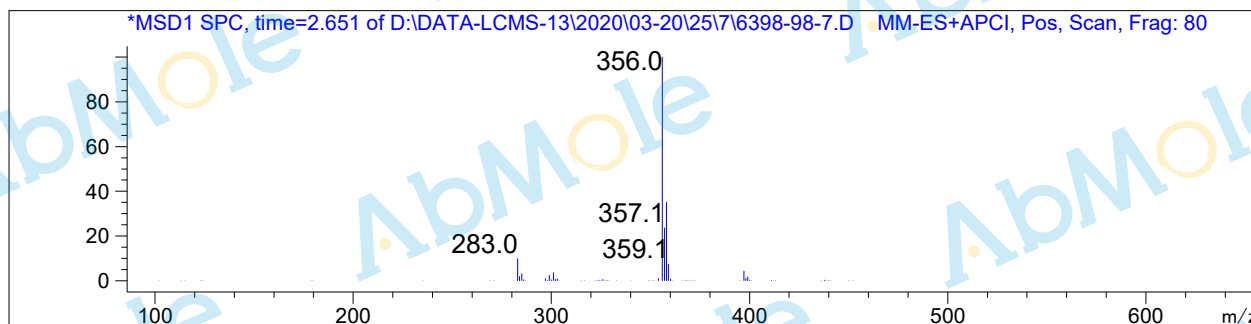
#	R.T.	Type	Height	Height%	Width	Area	Area %
1	2.626	BB	841.912	100.000	0.057	3256.756	100.000

Signal 2: DAD1 B, Sig=254,8 Ref=off

#	R.T.	Type	Height	Height%	Width	Area	Area %
1	2.626	BB	570.967	100.000	0.057	2208.032	100.000

Signal 3: MSD1 TIC, MS File

#	R.T.	Type	Height	Height%	Width	Area	Area %
1	2.655	MF	522117.594	100.000	0.093	2.911e+006	100.000



*** End of Report ***