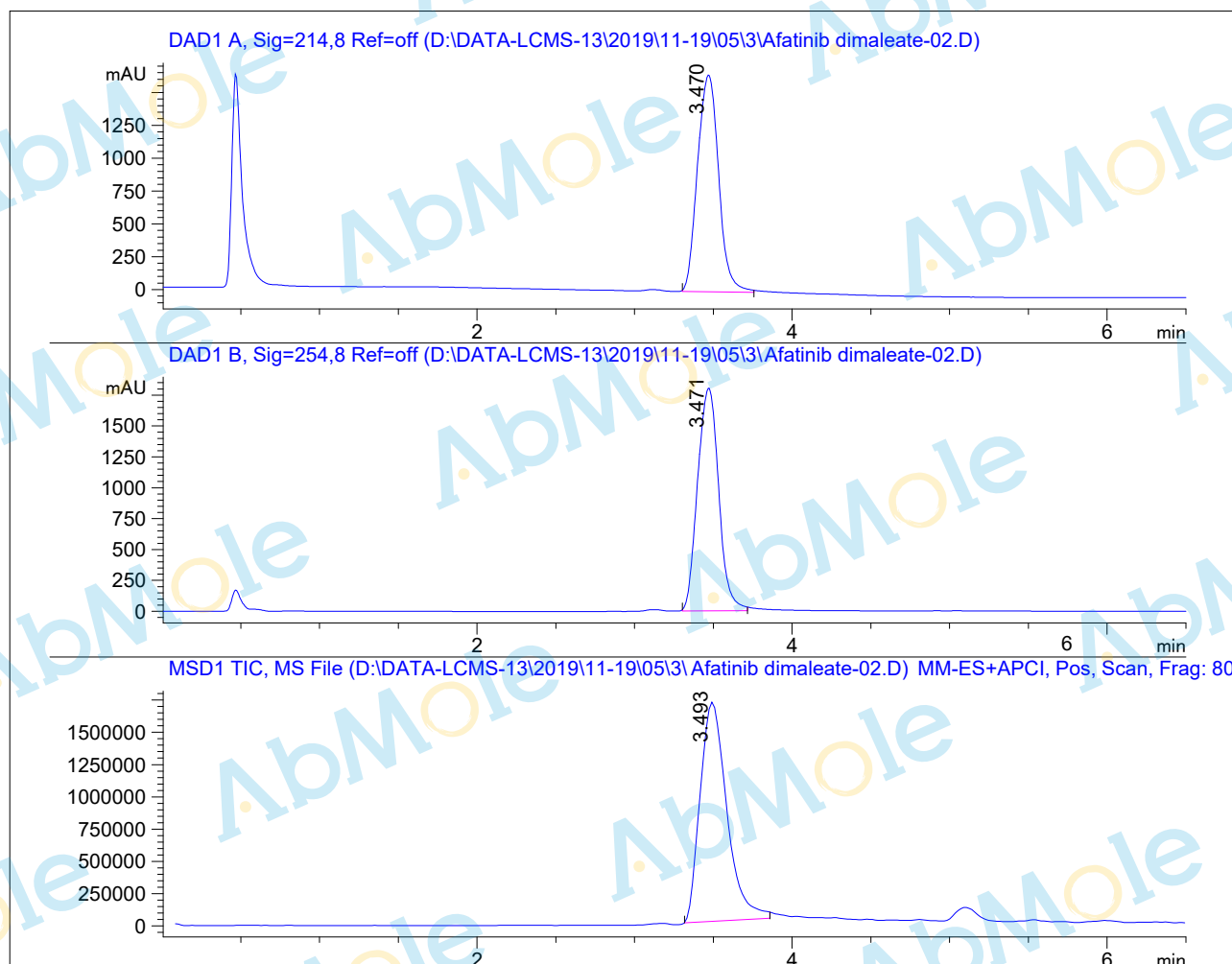


# LC-MS Report

Sample Name : Afatinib dimaleate-02  
Data File : D:\DATA-LCMS-13\2019\11-19\05\3\Afatinib dimaleate-02.D  
Injection Date : Tue, 5. Nov. 2019 Inj. Vol. : 5ul  
Acq Operator : LCMS-13 Location : Vial 43  
Acq. Method : D:\data-lcms-13\2019\11-19\05\3\P-05-95.M  
Method Info. : column:C18;column size:4.6\*50mm ;mobile phase:B (ACN)  
A(0.02%NH4Ac); gradient(B%):as Acq.Method above



## Integration Results

Signal 1: DAD1 A, Sig=214,8 Ref=off

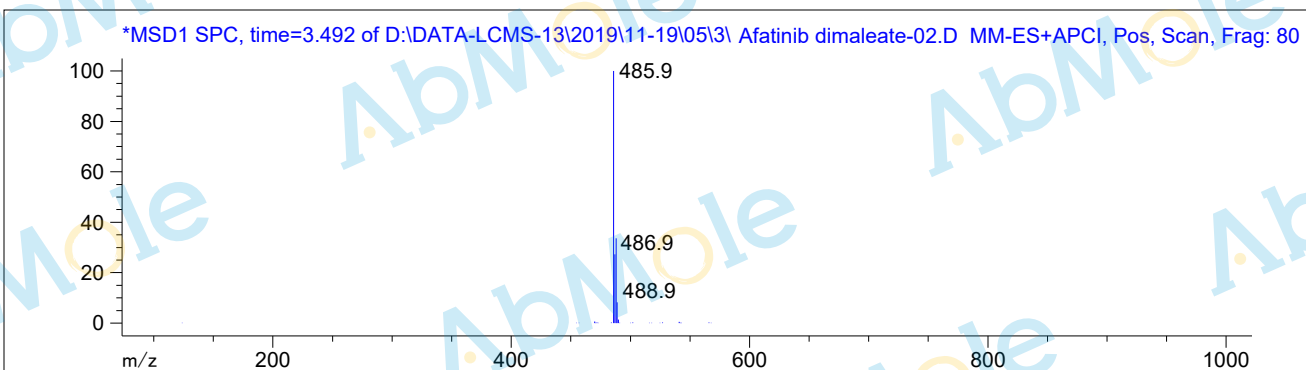
#	R.T.	Type	Height	Height%	Width	Area	Area %
1	3.470	FM	1651.281	100.000	0.155	15388.764	100.000

Signal 2: DAD1 B, Sig=254,8 Ref=off

#	R.T.	Type	Height	Height%	Width	Area	Area %
1	3.471	FM	1806.852	100.000	0.155	16817.469	100.000

Signal 3: MSD1 TIC, MS File

#	R.T.	Type	Height	Height%	Width	Area	Area %
1	3.493	BB	1.699e+006	100.000	0.190	2.005e+007	100.000



\*\*\* End of Report \*\*\*