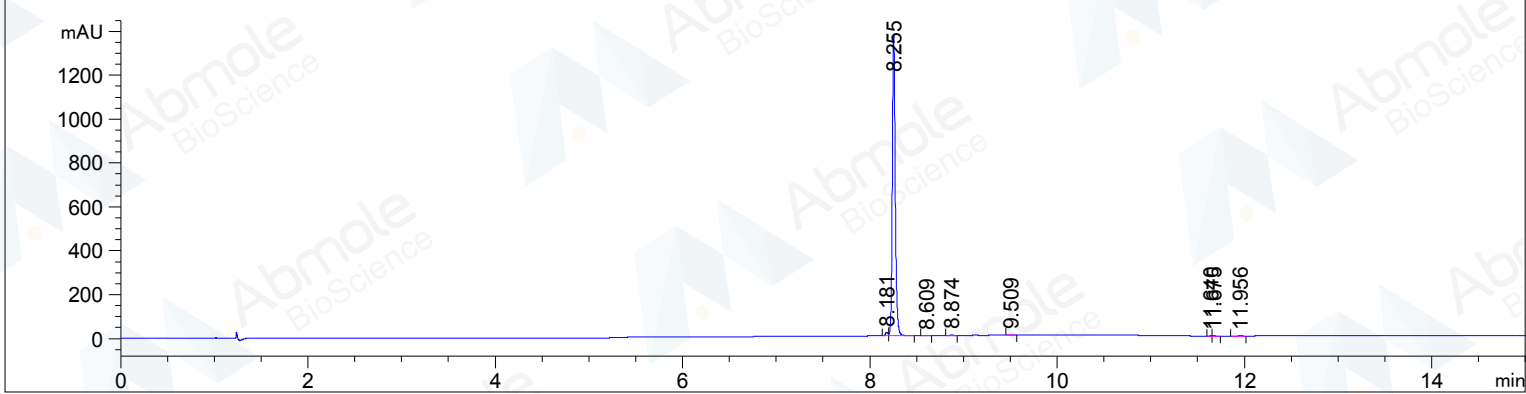
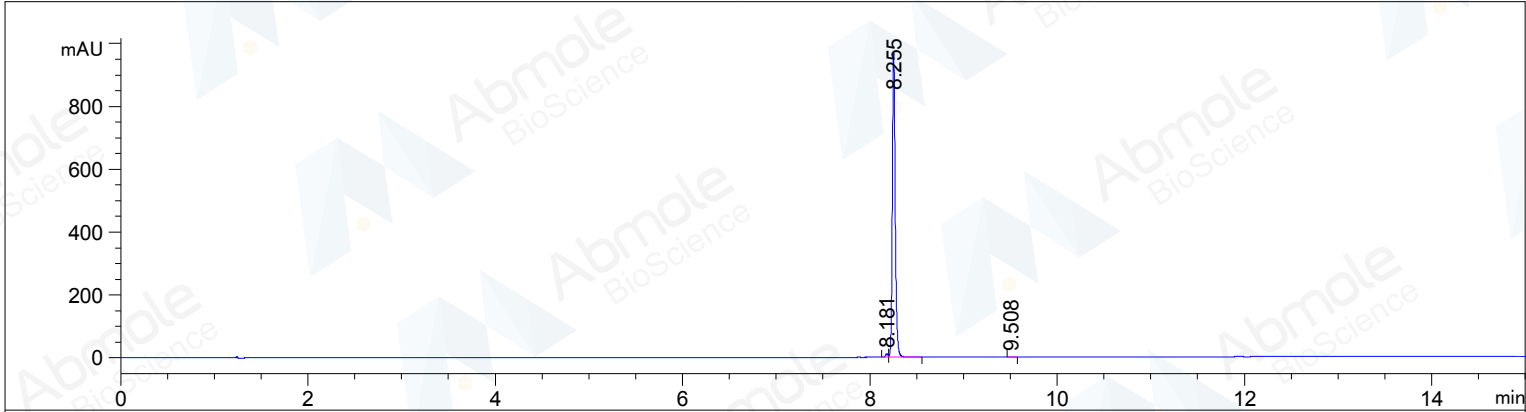


```

=====
Acq. Operator   : AbMole                               Seq. Line :   25
Acq. Instrument : HPLC 1260                           Location  : Vial  45
Injection Date  : 2016-6-4 2:24:37                    Inj       :    1
                                                    Actual Inj Volume : 1.500 µl
Acq. Method     : D:\HPLC\DATA\2016\2016-06-03 18-39-26\ -ZBL.M
Last changed    : 2016-6-3 18:39:09 : Xu Hui
Analysis Method : D:\HPLC\2016.06.03\ -ZBL.M
Last changed    : 2016-6-10 17:35:48 : hu li
                  (modified after loading)
Methods Information : XDB-C18 4.6mm*150mm 5um
=====
  
```



=====  
 Area Percent Report  
 =====

```

Sorted By      :      Signal
Multiplier     :      1.0000
Dilution       :      1.0000
Use Multiplier & Dilution Factor with ISTDs
  
```

Signal 1: DAD1 B, Sig=254,4 Ref=off

Peak #	RetTime [min]	Type	Width [min]	Area [mAU*s]	Height [mAU]	Area %
1	8.181	BV	0.0286	19.56477	10.57990	0.9255
2	8.255	VB	0.0327	2091.86035	967.19287	98.9582
3	9.508	BB	0.0339	2.45864	1.10947	0.1163

Totals : 2113.88376 978.88224

Signal 2: DAD1 C, Sig=214,4 Ref=off

Peak #	RetTime [min]	Type	Width [min]	Area [mAU*s]	Height [mAU]	Area %
1	8.181	BV	0.0279	30.46287	16.57991	1.0020
2	8.255	VB	0.0330	2986.65259	1367.22632	98.2413
3	8.609	BV	0.0342	2.54823	1.15707	0.0838
4	8.874	BB	0.0352	3.63618	1.61709	0.1196
5	9.509	VB	0.0343	4.49996	1.99735	0.1480
6	11.640	BV	0.0291	2.88437	1.52438	0.0949
7	11.675	VB	0.0338	4.42012	1.92111	0.1454
8	11.956	BB	0.0508	5.01524	1.40058	0.1650

Totals: 3040.11957 1393.42381

\*\*\* End of Report \*\*\*