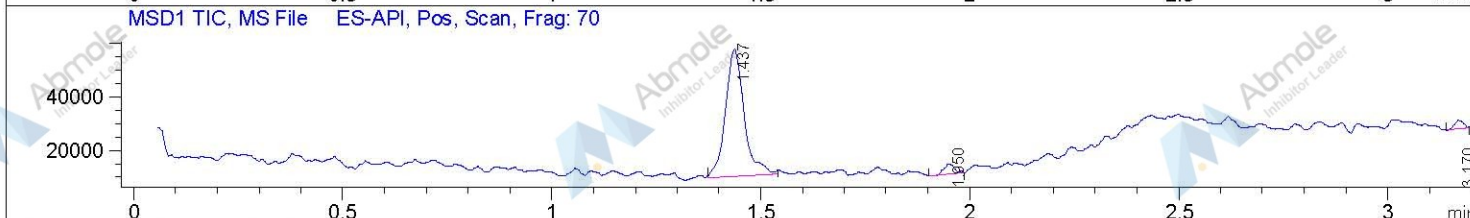
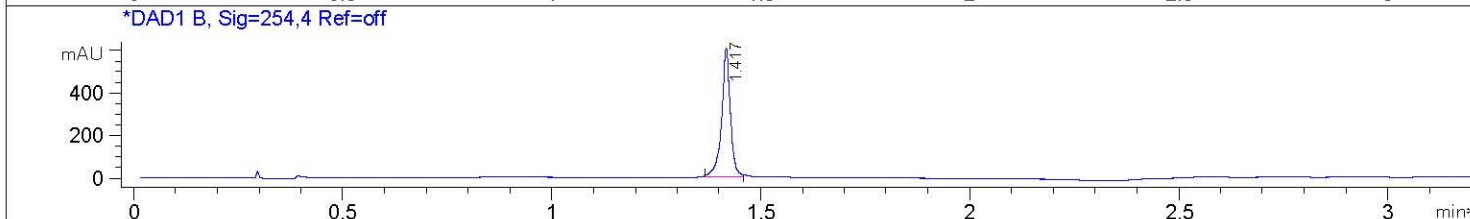
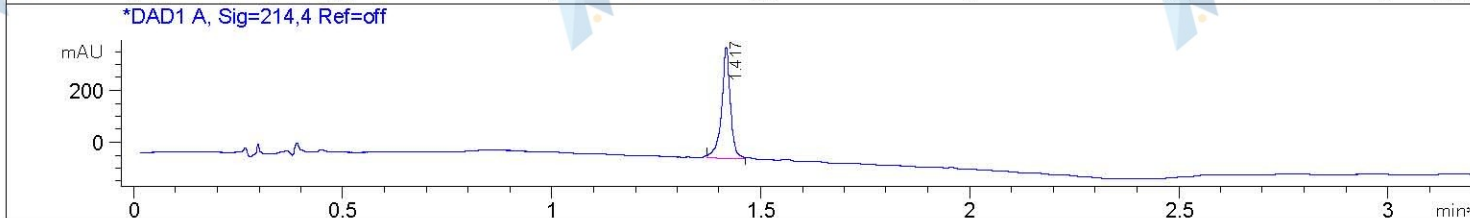
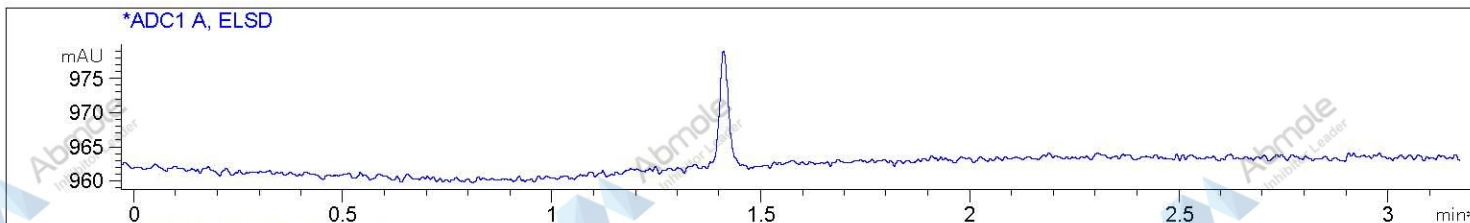


File D:\DATA\PRO2595-LCMS

Injection Date : 18 Nov 14 10:35 am +0800 Tgt Mass (EZ) :
 Sample Name : AZD7762 Hydrochloride-LCMS Location : P1-C-08
 Acq. Operator : LCMS Inj : 1
 Spec. Reported : MS Integration Inj Volume : 3 ul
 Acq. Method : C:\Chem32\1\METHODS\1-POS-3MIN.M
 Analysis Method : C:\Chem32\1\METHODS\1-POS-3MIN.M
 Sample Info : Easy-Access Method: '1-POS-3min'
 Method Info : Mobile Phase: A: water(0.01%TFA) B: ACN(0.01%TFA)
 Gradient: 5%-95% B in 1.7 min
 Flow Rate: 2.2 ml/min
 Column: SunFire C18, 4.6*50mm, 3.5um
 Column Temperature: 50 C
 MASS Range:110-900



Integration Results for ADC1 A, ELSD

RetTim	Width	Area	Height	Area%
--------	-------	------	--------	-------

Integration Results for DAD1 A, Sig=214,4 Ref=off

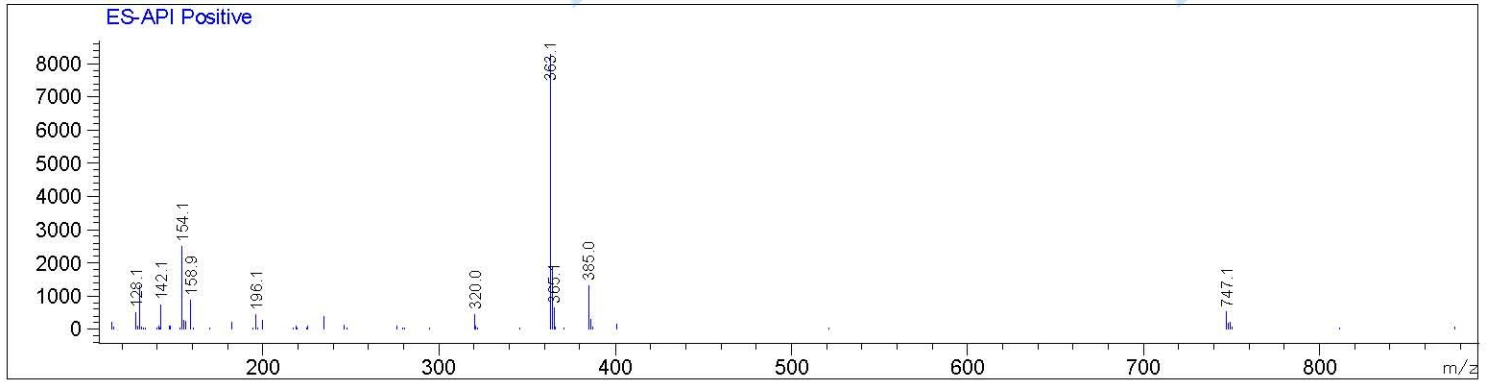
RetTim	Width	Area	Height	Area%
1.42	0.02	631.76	428.87	100.00

Integration Results for DAD1 B, Sig=254,4 Ref=off

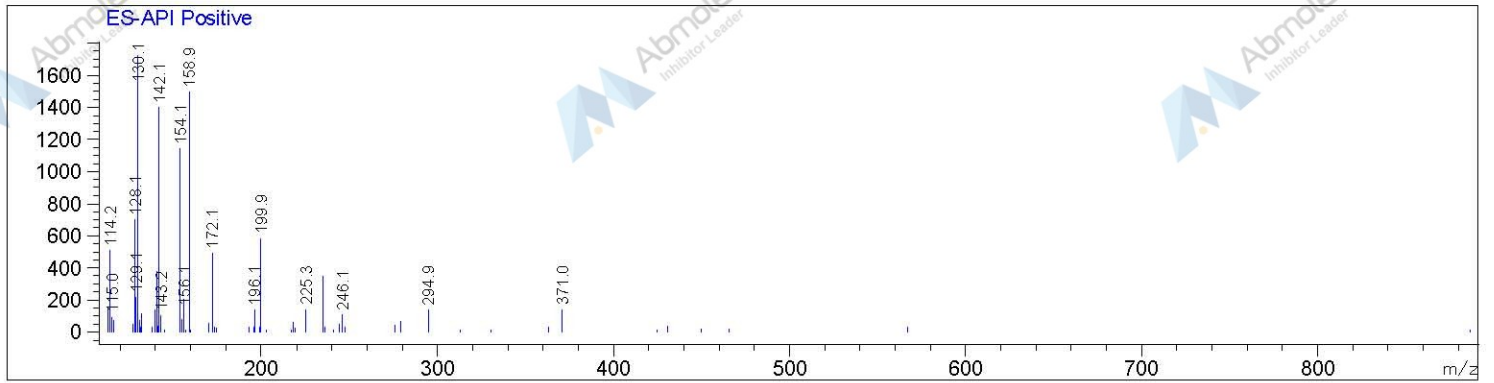
RetTim	Width	Area	Height	Area%
1.42	0.02	872.50	602.70	100.00

Ret. Time: 1.44

<<<< POSITIVE SPECTRA >>>>



Ret. Time: 1.95



Ret. Time: 3.17

