

9.066
9.061
9.056
8.630
8.150
8.145
8.024
8.019
7.859
7.840
7.835
7.795
7.774
7.689
7.687
7.680
7.678
7.612
7.610
7.600
7.597
7.512
7.491
7.240
7.231
7.227
7.218
4.902
3.678
3.338
3.334
3.330
3.325
3.321
2.565
2.507
2.489
2.471
2.453
2.442
1.148
1.130
1.112

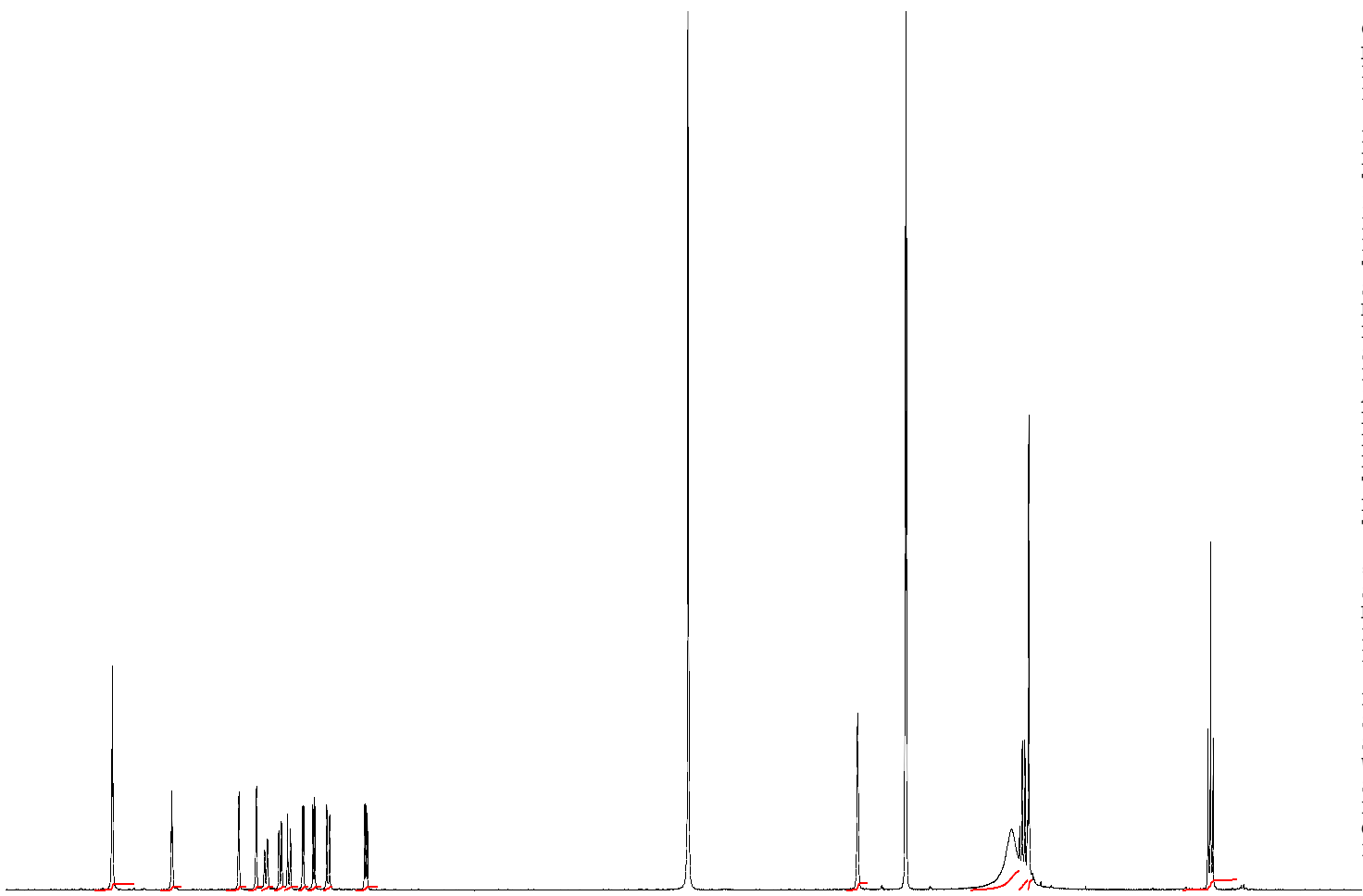


Current Data Parameters
 NAME ALW-II-41-27-01
 EXPNO 1
 PROCNO 1

F2 - Acquisition Parameters
 Date_ 20190304
 Time 12.19
 INSTRUM spect
 PROBHD 5 mm PADUL 13C
 PULPROG zg30
 TD 65536
 SOLVENT MeOD
 NS 8
 DS 2
 SWH 8012.820 Hz
 FIDRES 0.122266 Hz
 AQ 4.0894465 sec
 RG 199.46
 DW 62.400 usec
 DE 6.50 usec
 TE 295.7 K
 D1 1.00000000 sec
 TD0 1

==== CHANNEL f1 =====
 SFO1 400.1324710 MHz
 NUC1 1H
 P1 10.00 usec
 PLW1 20.00000000 W

F2 - Processing parameters
 SI 65536
 SF 400.1300000 MHz
 WDW EM
 SSB 0
 LB 0.30 Hz
 GB 0
 PC 1.00



9.5 9.0 8.5 8.0 7.5 7.0 6.5 6.0 5.5 5.0 4.5 4.0 3.5 3.0 2.5 2.0 1.5 1.0 ppm

2.00
1.00
1.03
1.02
1.03
1.06
1.04
1.01
1.01
1.00
1.01

2.07

6.06
3.11
3.10

3.24