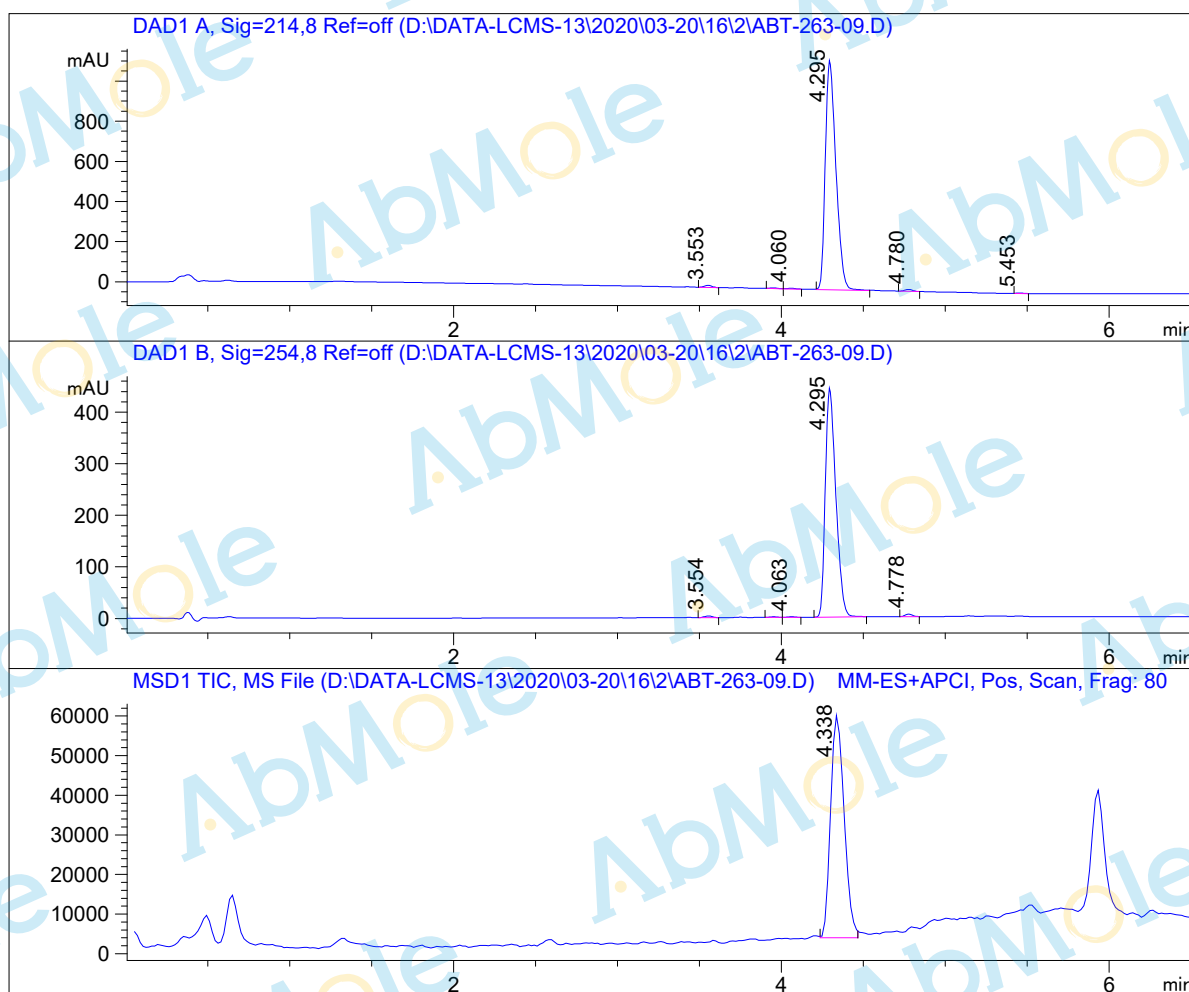


LCMS Report

Sample Name : ABT-263-09
 Data File : D:\DATA-LCMS-13\2020\03-20\16\2\ABT-263-09.D
 Injection Date : Mon, 16. Mar. 2020 Inj. Vol. : 3ul
 Acq Operator : LCMS-13 Location : Vial 22
 Acq. Method : D:\data-lcms-13\2020\03-20\16\2\P-40-95.M
 Method Info. : column:Eclipse XDB-C18 5um 4.6*150mm ;mobile phase:B(ACN) A(0.02%NH4AC); gradient(B%)!as Acq.Method above



Integration Results

Signal 1: DAD1 A, Sig=214,8 Ref=off

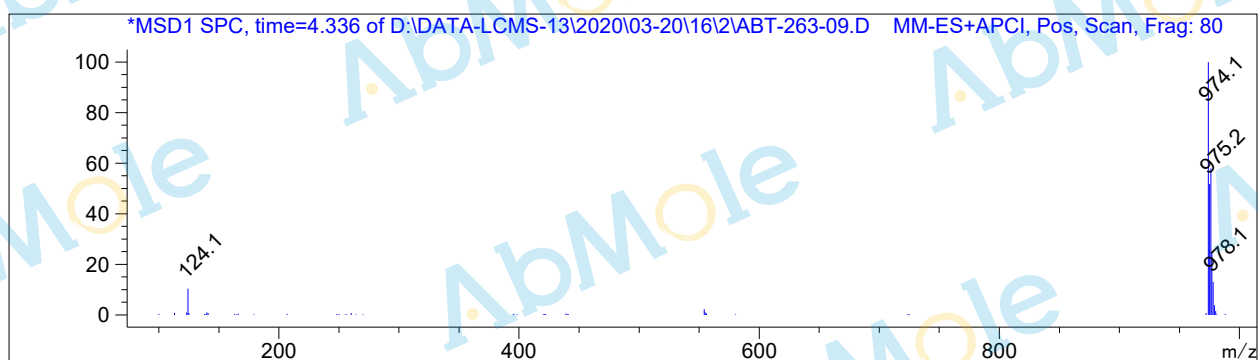
#	R.T.	Type	Height	Height%	Width	Area	Area %
1	3.553	MF	9.746	0.833	0.055	32.018	0.613
2	3.953	FM	3.294	0.281	0.052	10.361	0.198
3	4.060	MF	3.017	0.258	0.058	10.449	0.200
4	4.295	BB	1142.929	97.645	0.068	5136.980	98.305
5	4.780	MF	8.970	0.766	0.053	28.439	0.544
6	5.453	FM	2.539	0.217	0.048	7.330	0.140

Signal 2: DAD1 B, Sig=254,8 Ref=off

#	R.T.	Type	Height	Height%	Width	Area	Area %
1	3.554	MF	3.297	0.722	0.055	10.790	0.532
2	3.952	FM	1.370	0.300	0.055	4.487	0.221
3	4.063	MF	1.179	0.258	0.059	4.196	0.207
4	4.295	MM	445.958	97.633	0.074	1991.591	98.270
5	4.778	FM	4.968	1.088	0.052	15.596	0.770

Signal 3: MSD1 TIC, MS File

#	R.T.	Type	Height	Height%	Width	Area	Area %
1	4.338	MM	56604.742	100.000	0.095	322643.063	100.000



*** End of Report ***