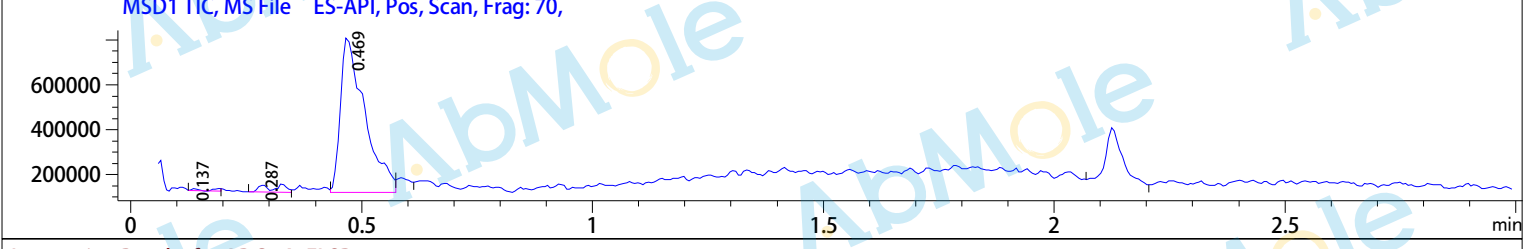
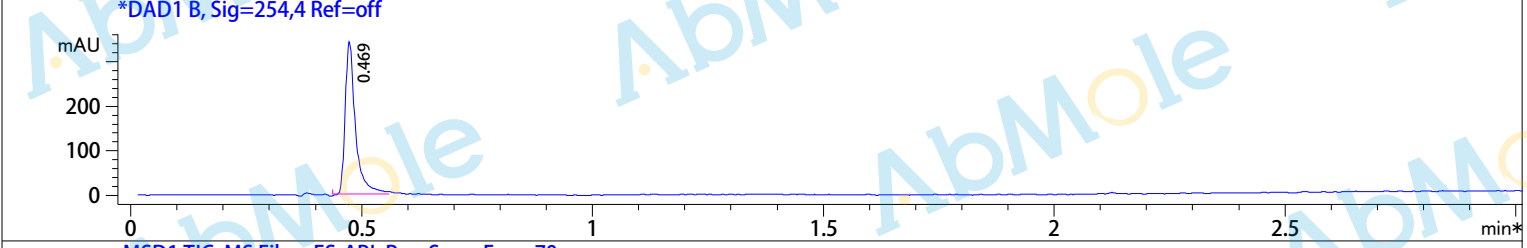
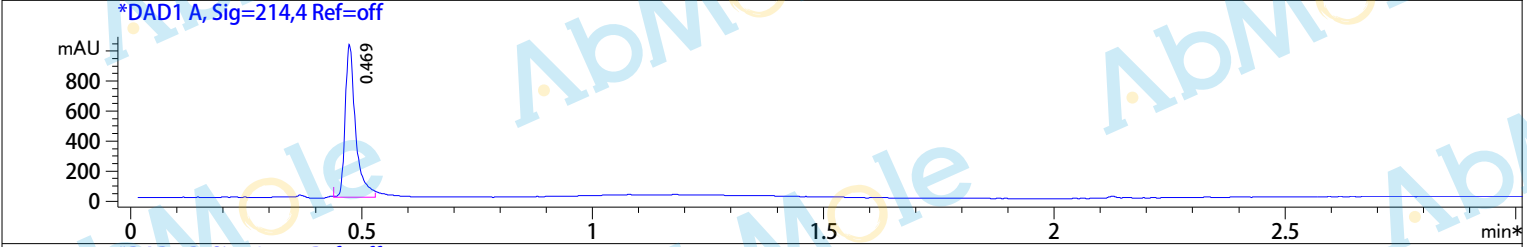
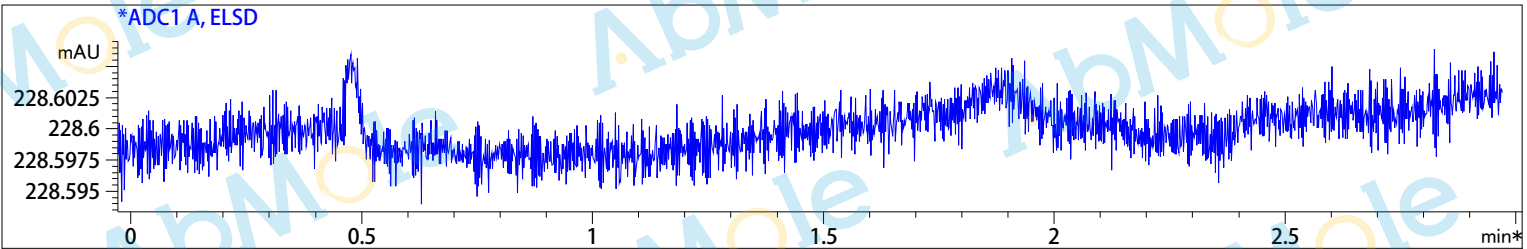


LC/MS Report

Injection Date : 26 Nov 20
 Sample Name : 3-Methyladenine-06
 Method Info : Mobile Phase: A:Water(10mM NH4HCO3) B:ACN
 Gradient: 5% increase to 95%B within 1.4min, 95%B for 1.6min.
 Flow Rate: 1.8ml/min
 Column: XBridge C18,4.6*50mm,3.5um
 Column Temperature: 45 C
 Detection:UV (214,4nm) and MS (ESI,Neg mode,110 to 1000 amu)



Integration Results for ADC1 A, ELSD

RetTim	Width	Area	Height	Area%
--------	-------	------	--------	-------

Integration Results for DAD1 A, Sig=214,4 Ref=off

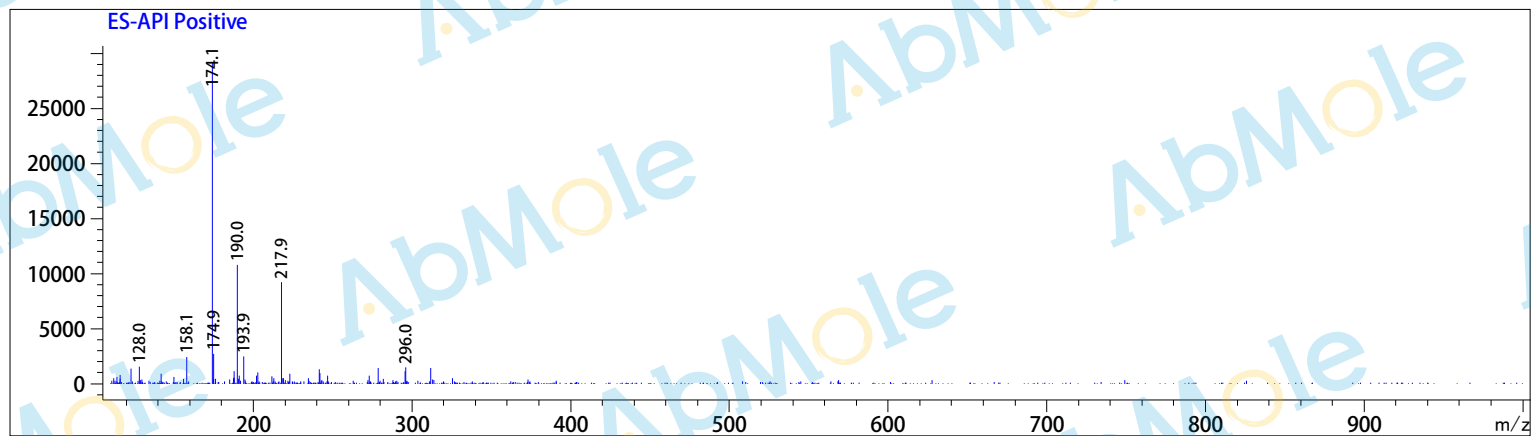
RetTim	Width	Area	Height	Area%
0.47	0.02	16.86	12.17	100.00

Integration Results for DAD1 B, Sig=254,4 Ref=off

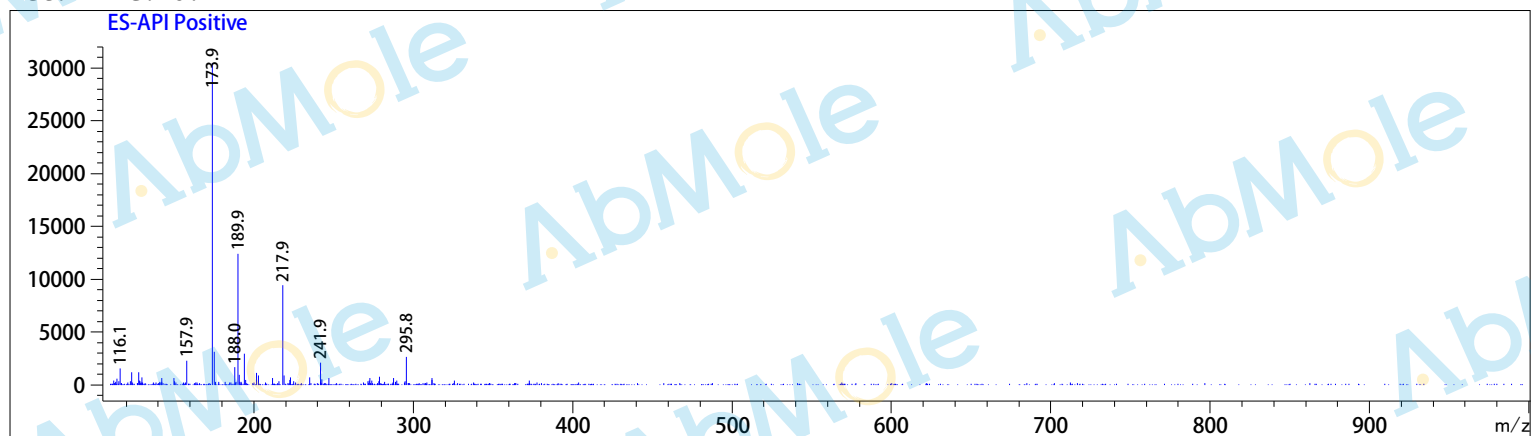
RetTim	Width	Area	Height	Area%
0.47	0.02	16.86	12.17	100.00

Ret. Time: 0.14

<<<< POSITIVE SPECTRA >>>>



Ret. Time: 0.29



Ret. Time: 0.47

